

Love
Edge



SWIFT
CREATING SMILES FOR LIFE



Love life

LOVE SWIFT

UNDER OUR OWN BLUE SKY

Take me to a place that I call Here,
Hold me in a time that I call This
The air is clean, the light is clear
And now an outdoor kind of bliss
Draws me to a spot I really love;
The door wide open, the kettle on,
A family that fits me like a glove.

A moment's pause for those who've gone
Who still remain in the mind and heart.

And now, under our very own blue sky
The rest of our lives can slowly start
And our spirits can begin to fly
With memories of where we've been,
Those mornings we have yet to know
Those brand new vistas all unseen.
Love life, I say. And now, let's go!

©Ian McMillan 2021

love life
LOVE SWIFT

Contents

PG05 LOVE EDGE -INSPIRING A NEW GENERATION

PG07 HIGHLIGHTS

PG12 EXTERIOR STYLE

PG14 SMART CONSTRUCTION

PG16 FEATURES

PG18 SOFT FINISHING SCHEME

PG20 TECHNICAL SPECIFICATION

PG22 WHERE TO BUY YOUR EDGE





Love
Edge

Inspiring
a new generation



NEW optional Expedition
Grey cab.

EDGE

FROM

£54,195^{OTR*}

An ideal first motorhome primarily designed with family life in mind, inspiring a new generation of life's adventurers. Edge presents an excellent level of standard equipment, which has been boosted even further for 2022 including a sleek dashboard design with 5" colour display and radio.

*On the road (OTR) price includes a recommended cost of £1,395.00 to cover delivery to dealer in Great Britain, a set of number plates (inc. VAT), 12 months road fund licence and first registration fee. See model for price details.

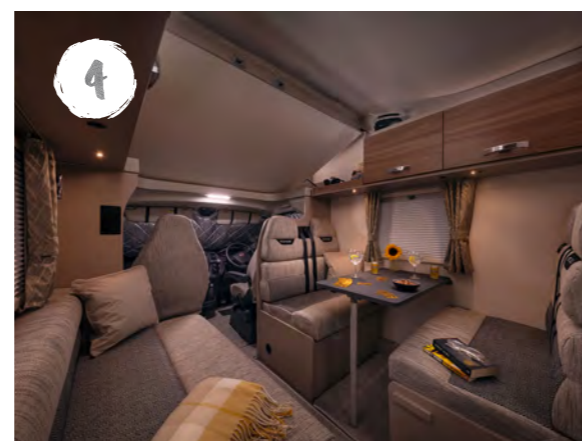
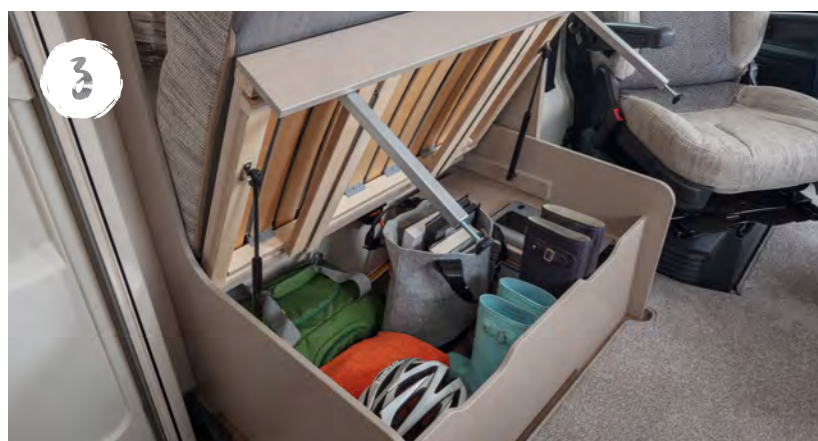


Highlights

A cosy sanctuary from the outside world, Edge now brings added interior refinement and specification enhancements. Designed for families, you'll find hardwearing furnishings, removable carpets and five layouts including the 466 with large rear bunk beds.

- 1 Captains chairs with twin armrests and headrest for relaxing driving.
- 2 Hardwearing Vittata soft furnishings and durable Swift AirWave foam in seats and backrests for greater comfort.
- 3 Beech slat seat and bed bases with spring-assisted tops and ample storage.
- 4 Pleated four-sided blinds and flyscreens on windows.
- 5 **NEW** Thetford combination thermostatic oven and grill, plus a 3-burner gas hob with **NEW** electric hot plate.
- 6 Fully equipped kitchen with digital microwave and **NEW** Dometic (Series 10) 85 litre fridge.

Prototype model: dashboard display screen size shown is different to production model.



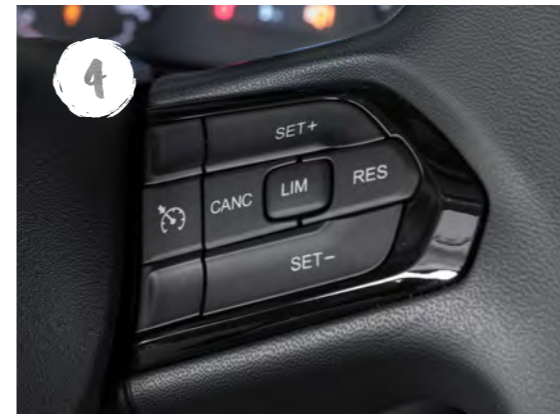


- 1** Exclusive Duvalay Duvalite Gravity Luxe mattress for a restful night's sleep*
- 2** Ultra-low energy lighting throughout, including LED downlights.
- 3** Chrome effect plugs and USB sockets for easy charging.
- 4** Sleek overhead lockers with ambient lighting for stylish storage.
- 5** Highline models feature an overcab bed for greater accommodation.
- 6** User-friendly 12V control panel with battery selection, battery state, lighting control and water pump circuit control.

*On fixed and Luton beds



Prototype model: dashboard display screen size shown is different to production model.



1 Fully fitted washroom with vanity unit, sink, toilet and shower.

2 100l internal fresh water tank and 60l waste water tank for superb utility.

3 **NEW** dashboard design including 5" colour display, DAB radio with USB and Bluetooth, central holder for tablet, cab air conditioning and more.

4 Cruise control for a smoother driving experience.

5 Driver and passenger airbags for added peace of mind when travelling.

6 15" wheels with full wheel trims or optional 16" alloy wheels with 140bhp upgrade.

Love
Style



Edge



- 1** Streamlined aerodynamic profile with stylish **NEW** exterior graphics.
- 2** Reversing sensors for added convenience.
- 3** Ample LED exterior lighting, including high-level brake light, for better visibility.
- 4** Bike rack fixing rails fitted to the rear, so you're ready for an adventure.
- 5** Flush fitting, double glazed, tinted acrylic windows with night latch ventilation.
- 6** Pack more with large exterior garage access door* or exterior locker**.
- 7** **NEW** Fiat Series 8 chassis cab in white with body coloured bumper for sleek styling.
- 8** **NEW** Euro 6D Final 120bhp, 2.2 litre engine with **NEW** 6-speed manual gearbox and Eco and ESC Packs including anti-slip regulation (ASR), roll over mitigation (ROM) and hill holder.

*476 **464, 466, 486 & 494

SMART CONSTRUCTION



SMART is the basis of our intelligent construction system used across our entire coachbuilt motorhome range. Strong, Modern, Aerodynamic, Resilient and Tested, you can be assured your Swift motorhome is a high quality, engineered product.



STRONG

The Strong timberless body frame uses 'PURE', a tough, hard polyurethane based product that is totally impervious to water and has been proven through use.



MODERN

The SMART construction system uses Modern materials and has been developed to ensure the exterior profiles maintain the Modern desirable looks our motorhomes are renowned for.



AERODYNAMIC

We continue to lead the way in Aerodynamics using Computational Fluid Dynamics to help shape the bodyshell for better fuel consumption.



RESILIENT

All fixings are made into the 'PURE' material to a pre-defined depth. 'PURE' is totally impervious to water and has no veins. This means there is no passage for water from the outer skin, making the motorhome highly Resilient to moisture.



TESTED

Extensive safety and durability Testing at the Millbrook track, and cold chamber Testing down to minus 15°C and beyond, puts prototypes through conditions most products will never have to experience in a lifetime; all part of the Swift ethos to deliver the best products.



HAIL RESISTANT GRP ROOF

Woven GRP outer surface provides greater durability from the elements.



GRP SIDEWALLS

Balanced panel side walls with GRP outer and inner skins. GRP is more impact resistant than aluminium and can be easily repaired, ensuring long lasting good looks and helping protect your investment for the future.



'SMART' GRP sidewall during the production process.



FLOOR CONSTRUCTION

'Sandwich' floor construction with ply upper, high rigidity Styrofoam core and GRP outer skin to provide greater durability from the elements.

FEATURES

EXTERIOR & CONSTRUCTION

- European Whole Vehicle Type Approval ensures compliance with strict weight, dimensions and safety regulations
- **NEW** Fiat Series 8 chassis cab in white, with body coloured bumper and silver grille trim
- EN 1646-1 Grade 3 classification for heating and thermal insulation, for sub-zero ambient temperatures, confirmed by cold chamber testing
- **NEW** Euro 6D Final 120bhp, 2.2 litre engine with **NEW** 6-speed manual gearbox and ESC & Eco Packs as standard
 - ESC includes: anti-slip regulation (ASR), roll over mitigation (ROM) and hill holder
 - ECO includes; stop and start system, smart alternator and more effective energy saving fuel pump
- 60L fuel tank and 19 LAD-blue based after treatment system
- SMART construction with full GRP body shell:
 - Strong, moisture proof 'PURE' Polyurethane timberless framed body shell with HD polystyrene insulation core
 - Balanced panel 31mm sandwich side walls with GRP outer and inner skin
 - 44mm sandwich floor construction with GRP outer skin, ply upper and high rigidity Styrofoam core
 - 31mm sandwich construction hail resistant exterior GRP roof, fully bonded for extra strength and flatness, and GRP inner skin
 - Full height GRP rear panel with replaceable lower corner caps
- GRP front high line pod with side window (466/476/486/494)
- GRP low line pod (464)
- White moulded skirts link with full GRP rear panel
- Distinctive streamlined exterior front profile
- Modern exterior graphics scheme coordinated with cab
- 15" wheels with full wheel trims
- Fix & Go puncture repair kit
- Daytime running lights
- Low energy LED lighting
 - Exclusive styled front marker lights
 - Side marker lights
 - Exclusive rear light clusters
 - High-level brake light
 - Exterior awning light
- **NEW** Dometic habitation door with 2 point locking system and integrated door retainer
- Large exterior 'garage' access door (476)
- Exterior locker (464, 466, 486 & 494)
- Provision for 1 x 6kg and 1 x 13kg gas bottle with fitted butane/propane regulator
- Flush fitting, double glazed, tinted acrylic windows with night latch ventilation
- Reversing sensors
- Bike rack fixing rails fitted to the rear
- All models have a MTPLM of 3500kg and can be driven on a normal category B driving license (except 466 which has an MTPLM of 3650kg)

DRIVING

- **NEW** dashboard design including:
 - **NEW** 5" colour display
 - **NEW** steering wheel with steering wheel controls
 - **NEW** 3.5" Instrument cluster and infotainment system
 - **NEW** cab light, back lighting & floor lights
 - **NEW** DAB radio with USB and Bluetooth
 - **NEW** central area with pocket for smartphone, double USB points and cup holders
 - **NEW** door pockets with bottle holder
 - Cab air-conditioning
 - Cruise control
 - Driver and Passenger airbags

- ABS brakes
- EBD (electronic brake force distribution)
- Immobiliser with rolling code
- Variable power steering
- Electrically adjusted and heated wing mirrors with DAB aerial
- Electrically operated and tinted cab windows
- Adjustable headlamp height
- Adjustable steering wheel position
- Thermal cab window covers
- Removable and bleachable cab carpet
- Central dash mounted holder for full width tablet with USB point
- Driver and passenger captain chairs both with:
 - Position, height and rake adjustment
 - Swivel base (except 466/476/486)
 - Two armrests
 - Integrated headrest
 - Fully upholstered covers
 - Seat base surrounds

LIVING, RELAXING & SLEEPING

- Vittata soft furnishing scheme with two scatter cushions
- Contemporary Hessian coloured furniture with Aralie Sen woodgrain doors
- French Oak effect, high impact, scratch resistant floor lino
- Sectioned removable and bleachable carpets for flexibility
- Removable stepwell mat
- Two-position front seating arrangement with two forward facing travelling seats (464/494)
- Four-position front dinette seating with two forward facing and two rear facing travelling seats (466/476/486)
- Ergonomically shaped rear travelling seats
- Lap and diagonal seat belts on all designated passenger seats
- High performance, durable Swift AirWave foam in seats and backrests for greater seating and sleeping comfort
- Seat backrest ventilation boards
- Lounge bench seat cushions and bed mattresses supported by beech slats for extra comfort (model specific)
- Exclusive Duvalay Duvalite Gravity Luxe mattress (fixed beds and Luton beds)
- Luton overcab fixed beds (466, 476, 486, 494)
- Roof light in lounge area with flyscreen and adjustable pleated blind
- Pleated four-sided blinds with flyscreen on all windows (three-sided on Luton window)
- Fitted curtains
- Metal curtain tracks for room divider and washroom curtains
- Easy action concertina door flyscreen

EATING

- **NEW** Thetford combination thermostatic oven and grill, plus a 3 burner gas hob with **NEW** electric hot plate, all with electronic ignition. Hob features a glass lid with auto gas shut-off functionality
- Built-in microwave oven with digital controls
- **NEW** Dometic (Series 10) 85 litre automatic energy selection fridge with 230V, gas and 12V operation
- Kitchen worktop in Fero dark grey with textured finish and durable stainless steel sink
- Foldaway kitchen worktop extension (except 464)
- Vector chrome effect kitchen mixer tap
- Wall mounted dining tables
- Kitchen roof light with flyscreen and blind

WASHING

- Washroom design with vanity unit, sink and shower
- Chrome effect mixer tap for vanity and dedicated showerhead
- High gloss white washroom wallboard
- Thetford cassette toilet with electric flush and 18 litre wheeled tank
- Overhead towel shelf
- Towel robe hook
- Micro-Heki skylight with flyscreen (except 464 which has side window)
- 32mm thick entrance door with domestic style mortice lock and handle

STORAGE

- Positive locker catches throughout for secure storage on the move with chrome handles
- Lounge seat and bed tops gas spring assisted for easy storage access (except travelling seats)
- Drawer storage under oven (model specific)

UTILITIES

- EC400 Control unit with simple controls for monitoring and managing:
 - Battery selection and battery level meter
 - Selected lighting control
 - Water system controls and tank levels
- Dual fuel Truma Combi boiler for excellent heating efficiency
- Digital programmable controller for heating and hot water
- Truma gas regulator
- Pressurised fresh water system with self-priming pump and accumulator
- 100 litre internal fresh water tank with level sensor
- 60 litre waste water tank with level sensor
- Manual drain valve on waste water tanks
- Winter pack fitted with waste water tank heater
- Fully sealed, long life, 80 Amp-hour (Dir 2006/66/EC) leisure battery below driver's seat
- Mains 230V supply, via easy-access consumer unit, to sockets, fridge, heater, water heater and battery charger/transformer
- 25 metre mains hook-up cable
- 25 Amp/300 Watt charger/transformer for leisure batteries
- Ultra-low energy LED lighting system throughout interior including:
 - Downlights on undersides of lockers
 - Over-locker ambient lighting
 - Strip lighting in kitchen china locker
- A minimum of four chrome 230V sockets and increased dedicated USB points
- USB point for rear passenger seats
- **NEW** under locker USB points
- Status 570 TV aerial
- TV points with 230V and 12V sockets and aerial socket

SAFETY & SECURITY

- VIN CHIP™ identification system concealed within construction to deter theft and aid quick recovery
- Single key for all habitation doors
- Key fob operated remote central locking of cab doors
- Smoke alarm
- Carbon monoxide alarm

CUSTOMER SERVICE

- Manufacturer backed 10 year bodyshell warranty

OPTIONS

Factory Fit

- Upgrade to 140bhp, 2.2 litre engine with 6-speed manual gearbox and 16" alloy wheels
- Upgrade to 140bhp, 2.2 litre engine with 9-speed full automatic transmission* and 16" alloy wheels
- Detachable homologated tow bar and electrics*
- Thule roll out awning (464 & 494)
- 'SwiftShield' soft furnishing scheme
- **NEW** Expedition Grey cab colour (464 & 494)
- **NEW** Expedition Grey cab colour with front swivel seats (466, 474 & 486)

*When fitted to 476 & 486 must take MTPLM upgrade to 3650KG

Dealer Fit

- 3650kg MTPLM upgrade (excludes 466)
- Thule roll out awning (466, 476 & 486)
- Thule rail mounted rear cycle rack



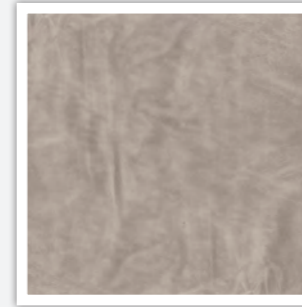
SOFT FURNISHING SCHEME

Within the Edge range the 'Vittata' fabric scheme comes as standard. Please note that due to ongoing supply issues, your Edge motorhome curtain fabric may be made from one of the swatches below. Please refer to the image at the bottom of this page, or see page 6 for a visual reference.

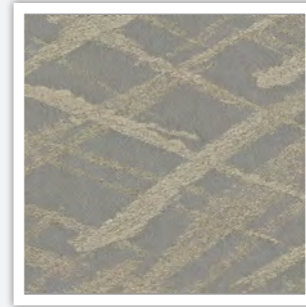
SEATING

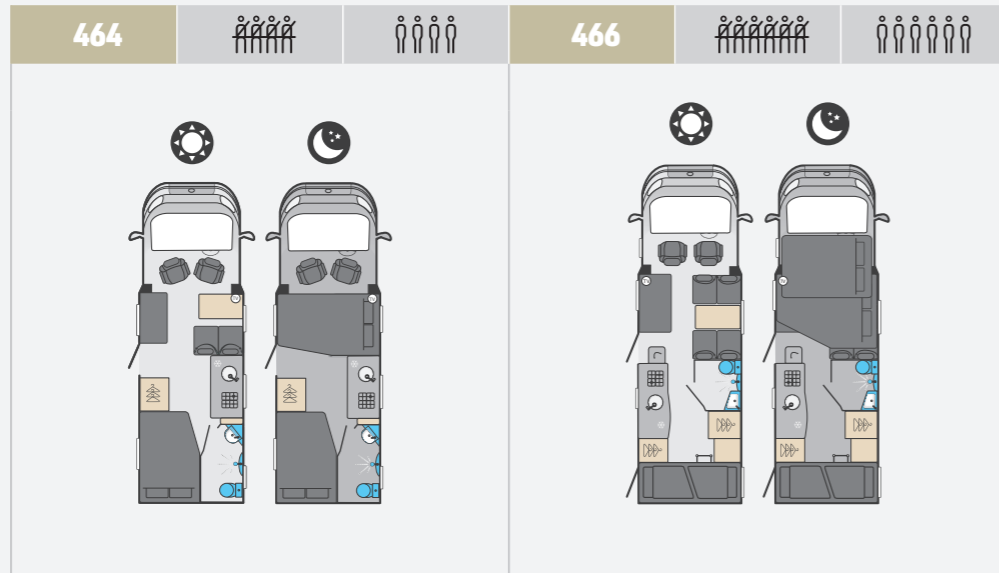


CUSHION

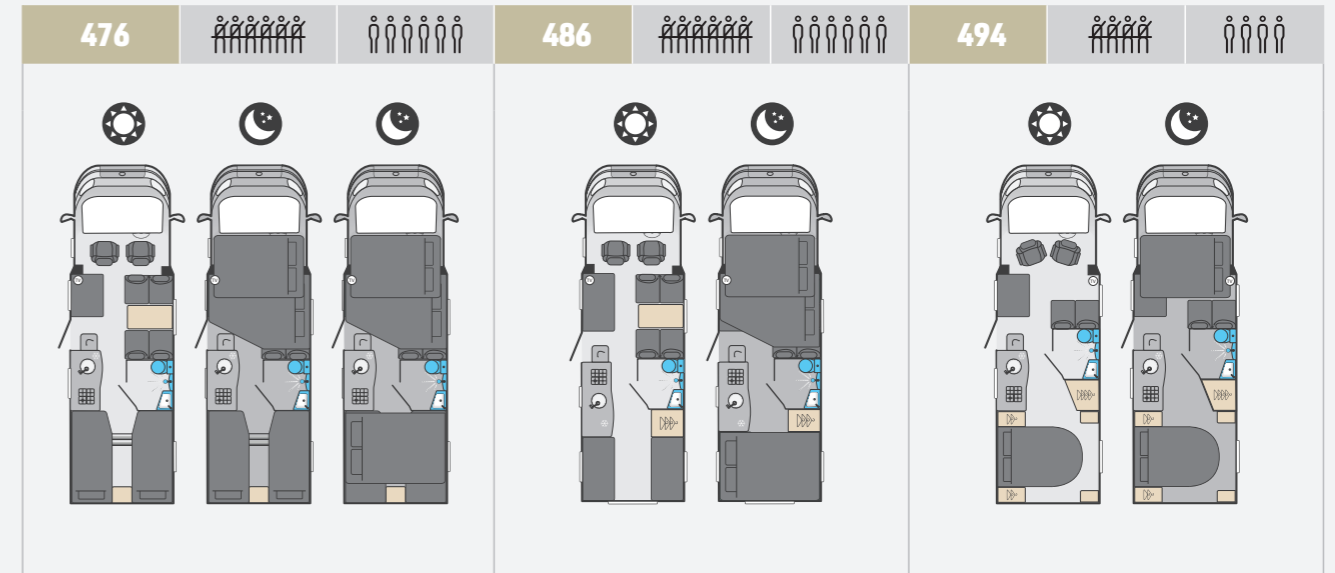


CURTAIN





	Standard	Optional	Optional	Standard	Optional	Optional
Fiat MultiJet diesel engine	120	140	140 Auto	120	140	140 Auto
Engine capacity	2.2ltr			2.2ltr		
Engine power	120 Hp @ 3500 rpm	140 Hp @ 3500 rpm	140 HP @ 3500rpm	120 Hp @ 3500 rpm	140 Hp @ 3500 rpm	140 HP @ 3500rpm
Engine torque	320 Nm @ 1400 rpm	350 Nm @ 1400 rpm	380 Nm @ 1400rpm	320 Nm @ 1400 rpm	350 Nm @ 1400 rpm	380 Nm @ 1400rpm
Roof profile	Low-Line			High-Line		
Wheel base	3.80m / 12'6"			4.04m / 13'3"		
Seat belts (inc. driver)	4			6		
Berths (sleeping positions)	4			6		
Overall length	6.75m / 22'2"			7.32m / 24'0"		
Overall body width (mirrors folded)	2.39m / 7'10"			2.39m / 7'10"		
Overall height	2.91m / 9'6"			2.98m / 9'9"		
Optional awning	Thule 4200 3.5m			Thule 4200 3.5m		
Maximum technical permissible laden mass (A)	3500kg			3650kg		
Mass in running order (B)	2821kg	2821kg	2854kg	3016kg Est	3016kg Est	3049kg Est
Maximum user payload (A-B)	679kg	679kg	646kg	634kg Est	634kg Est	601kg Est
Thermal insulation grade	THREE			THREE		
Recommended maximum trailer weight	2000kg			2000kg		
Gross train weight	5500kg			5650kg		
BED SIZES						
Front double	215cm x 123cm / 92cm / 7'1" x 4'0" / 3'0"			215cm x 180cm / 121cm / 7'1" x 5'11" / 4'0"		
Rear double	188cm x 133cm / 6'2" x 4'4"					
Rear nearside single						
Rear offside single						
Rear bunk (upper)				204cm x 85cm / 6'8" x 2'9"		
Rear bunk (lower)				204cm x 85cm / 6'8" x 2'9"		
Overcab bed				190cm x 134cm / 6'3" x 4'5"		



Standard	Optional	Optional	Standard	Optional	Optional	Standard	Optional	Optional
120	140	140 Auto	120	140	140 Auto	120	140	140 Auto
2.2ltr			2.2ltr			2.2ltr		
120 Hp @ 3500 rpm	140 Hp @ 3500 rpm	140 HP @ 3500rpm	120 Hp @ 3500 rpm	140 Hp @ 3500 rpm	140 HP @ 3500rpm	120 Hp @ 3500 rpm	140 Hp @ 3500 rpm	140 HP @ 3500rpm
320 Nm @ 1400 rpm	350 Nm @ 1400 rpm	380 Nm @ 1400rpm	320 Nm @ 1400 rpm	350 Nm @ 1400 rpm	380 Nm @ 1400rpm	320 Nm @ 1400 rpm	350 Nm @ 1400 rpm	380 Nm @ 1400rpm
High-Line			High-Line			High-Line		
4.04m / 13'3"			4.04m / 13'3"			4.04m / 13'3"		
6			6			4		
6			6			4		
7.32m / 24'0"			7.32m / 24'0"			7.32m / 24'0"		
2.39m / 7'10"			2.39m / 7'10"			2.39m / 7'10"		
2.98m / 9'9"			2.98m / 9'9"			2.98m / 9'9"		
Thule 4200 3.5m			Thule 4200 3.5m			Thule 4200 3.5m		
3500kg	3500kg	3650kg	3500kg	3500kg	3650kg	3500kg		
2991kg	2991kg	3024kg	2991kg	2991kg	3024kg	2975kg	2975kg	3008kg
509kg	509kg	626kg	509kg	509kg	626kg	525kg	525kg	492kg
THREE			THREE			THREE		
N/A	N/A	2000kg	N/A	N/A	2000kg	2000kg		
3500kg	3500kg	5650kg	3500kg	3500kg	5650kg	5500kg		
215cm x 180cm / 86cm / 7'1" x 5'11" / 2'10"			215cm x 180cm / 121cm / 7'1" x 5'11" / 4'0"					
214cm x 143cm / 7'0" x 4'8"			214cm x 131cm / 7'0" x 4'4"			185cm x 133cm / 6'1" x 4'4"		
191cm x 83cm / 6'3" x 2'5"								
191cm x 83cm / 6'3" x 2'5"								
190cm x 134cm / 6'3" x 4'5"			190cm x 134cm / 6'3" x 4'5"			190cm x 134cm / 6'3" x 4'5"		

GENERAL TECHNICAL NOTES

1. The Maximum User Payload includes:

- a) The conventional load (this is the allowance for passengers)
- b) Essential habitation equipment (items and fluids required for safe and proper functioning of habitation equipment)
- c) Optional equipment (items available from the manufacturer over and above the standard specification)
- d) Personal effects (those items not covered by the above)

2. The Mass in Running Order is the mass of the unladen vehicle including a 75kg allowance for the driver plus engine coolants and 90% of the fuel tank capacity and 1 x 6kg Calor Lite LPG cylinder. The MRO is calculated with the fresh water tank empty. If you travel with water in the fresh water tank then the payload will reduce accordingly.

3. Please take care to ensure that you have allowed for the masses of all items you intend to carry in the motorhome, e.g. passengers, optional equipment, essential habitation equipment and personal effects, such as clothing, food, pets, bicycles, sailboards, sports equipment etc.

4. Warning - under no circumstances should the maximum technical permissible laden mass of this motorhome be exceeded.

Est = Estimate

ENGLAND - NORTH WEST

- 01. **Todds Motorhome Specialists**, Preston
toddsmotorhomes.co.uk
- 02. **Preston Caravans & Motorhomes**,
prestoncm.co.uk
- 03. **Low & Rhodes**, Stoke-on-Trent
loweandrhodes.co.uk

ENGLAND - YORKSHIRE

- 04. **Wandahome**, South Cave
caravanbuys.com
- 05. **Ebor Leisure World Group**
leisureworldgroup.com
- 06. **Lowdham Leisureworld**, Huddersfield
lowdhams.com

ENGLAND - WEST MIDLANDS

- 07. **South Hereford Motorcaravan Centre**
motorcaravancentre.co.uk
- 08. **Salop Leisure**, Shrewsbury
salopleisure.co.uk
- 09. **Broad Lane Leisure**, Alcester
broadlane.co.uk
- 10. **Broad Lane Leisure**, Kenilworth
broadlane.co.uk
- 11. **AEG Motorhomes**, Stourbridge
aegmotorhomes.co.uk

ENGLAND - EAST MIDLANDS

- 12. **Glossop Caravans**, Glossop
glossopcaravans.co.uk
- 13. **Don Amott Leisure Ltd**, Derby
leisurekingdom.co.uk
- 14. **Timberland Motorhomes**, Chesterfield
timberlandmotorhomes.com
- 15. **Camper UK**, Lincoln
camperuk.co.uk
- 16. **Brownhills Motorhomes**, Newark
brownhills.co.uk
- 17. **Lowdham Leisureworld**, Nottingham
lowdhams.com
- 18. **Croyland Car Megastore**, Rushden
croylandcarmegastore.co.uk

ENGLAND - SOUTH WEST

- 19. **Alan Kerr Ltd**, Paignton
alankerr.co.uk
- 20. **Highbridge Caravan Centre**, Highbridge
highbridgecaravans.co.uk
- 21. **West Country Motorhomes**, Brent Knoll
westcountrymotorhomes.co.uk
- 22. **West Country Motorhomes**, Swindon
westcountrymotorhomes.co.uk

ENGLAND - SOUTH EAST

- 23. **Homestead Caravan Centre**, Weeley
homesteadcaravans.co.uk
- 24. **MG Caravans**, Royston
mgcaravans.com
- 25. **Downtide Caravans & Leisure**, Norwich
downtide.com
- 26. **Stewart Moulard Motorcaravans**,
stewartmoulard.co.uk

SCOTLAND

- 27. **Halleys Burnhouse Caravans**,
halleycaravans.co.uk
- 28. **Knowepark Caravans & Motorhomes**,
Livingston
kpcm.co.uk

WALES

- 29. **3 As Caravan Co**, Carmarthen
3acaravans.co.uk
- 30. **Spinney Flintshire**, Deeside
spinney.co.uk

NORTHERN IRELAND

- 31. **Thompson Leisure**, Dromore
thompsonleisure.com





SWIFT
CREATING SMILES FOR LIFE

VIEW & DOWNLOAD
YOUR COMPLETE RANGE
OF SWIFT BROCHURES HERE
swiftgroup.co.uk/downloads

OR SCAN THE QR CODE



swiftgroup.co.uk

DISCLAIMER

This brochure does not constitute an offer by Swift Group Limited (Swift). Swift reserves the right to alter specifications and prices at any time as materials and conditions demand. Distributors and dealers sell Swift products on their own account and not as agents of Swift. Accordingly, they have no authority to bind Swift or to make any representation or undertaking whatsoever on behalf of Swift. All props are for photographic purposes only and are not included in the specification. Models shown may be fitted with optional extras. Issued September 2021.

CARAVANS • MOTORHOMES • HOLIDAY HOMES - MADE IN BRITAIN BY SWIFT

