



SWIFT


Your Home Anywhere

HOLIDAY LODGES

GET AWAY FROM IT ALL

At Swift, we want your lodge to become your sanctuary - a place where you can truly unwind, relax, and let the stresses of everyday life melt away. Our unwavering dedication to innovation ensures that we deliver products that are not only luxurious but also practical. With each stay at your lodge, you're not just enjoying a holiday, but crafting cherished memories that will last a lifetime.



LODGE RANGE

Welcome to Swift's lodge collection, where you'll find your sanctuary. Across these exceptional ranges are stylish, relaxing and practical spaces, providing luxury retreats from everyday life. Make new memories and reconnect with loved ones, while enjoying the sophisticated design and superior fittings that set Swift products apart.



CONTENTS

- 4 Five steps to lodge ownership
- 5 Find your happy place
- 6 Trends and design insights
- 7 Swift's lodge range
- 8 Why Swift?
- 9 The Swift Difference
- 10 Toronto Lodge
- 16 Edmonton Lodge
- 22 Vendee Lodge
- 26 Moselle Lodge
- 32 Lodges at a glance
- 34 Lodge dimensions
- 35 Swift warranty scheme
- 36 Exterior finishes
- 37 Swift approved partners



FIVE STEPS TO LODGE OWNERSHIP

Your very own holiday lodge opens up endless opportunities for breaks away and making memories for years to come. But knowing where to start can be overwhelming; what aspects do you need to consider? What lodge is for you? How do you choose your favourite holiday park?

We know the questions can feel exhausting, so we've put together a handy guide to get you started on your quest to find your dream lodge at your perfect location.



STEP ONE

Is lodge ownership right for me?

If you're seeking regular breaks throughout the year along with the freedom to come and go as you please, then lodge ownership could be right for you. Ownership gives you the opportunity to spend quality time with your friends and family, as well as the opportunity to pursue and enhance your favourite hobbies – whether that be walking or cycling, an interest in wildlife and nature, or just simply to enjoy the peace that a regular escape can offer.

STEP TWO

Finding your dream park

This is perhaps the most important step, so we encourage you to really take your time and be very thorough with your research. Getting this step right will ensure you years of happiness.

We've created a destinations page showing highlights of top UK destinations: [swiftholidayhomes.co.uk/destinations/](https://www.swiftholidayhomes.co.uk/destinations/)

STEP THREE

Visiting the parks

Once you've established everything you need from a holiday lodge, create a shortlist of your favourite parks, so you can visit each one to help you choose the one that's right for you.

STEP FOUR

Choosing your lodge

At Swift, we dedicate a lot of time to fully understand your holidays and what makes them special. Our lodges are made with the finest materials from leading suppliers, and with space at a premium, storage design is an important aspect. Both finish and practicality are of utmost importance, and this combination ensures Swift remains a popular choice.

You'll need to consider the level of specification you want – at the top end, features such as a dishwasher and a wine cooler can come as standard, while some of our lodges might offer these as an optional extra. So, take your time to figure out what additions you need to make your holidays special.

STEP FIVE

What happens now?

Now you've chosen your lodge, your hard work is done, and you just need to wait for the keys! Your park and dealer will work together to ensure a smooth handover, taking care of the transport, siting, connections and commissioning.

When you pick up your keys, your park will typically provide a full handover, taking you through your new lodge to ensure you are confident with how everything works and answer any questions you may have.

FIND YOUR HAPPY PLACE

Choosing your perfect location is one of the most important decisions you'll make when purchasing your lodge. But with so many beautiful locations across the UK and Ireland, it can be tricky to pin down your ultimate destination. From speaking to customers, we believe that choosing a holiday park within a 2-3 hour drive is optimum for ensuring you can make the most of your lodge.

For holiday inspiration, we've put together a selection of videos showcasing key highlights from different regions. We've also done the hard work, so you don't have to, and have collated a list of holiday parks across the UK and Ireland, with contact details and website information so you can book a visit. For more information visit: [swiftholidayhomes.co.uk/destinations/](https://www.swiftholidayhomes.co.uk/destinations/)



SCOTLAND



WALES



NORTHERN IRELAND



LAKE DISTRICT & NW



YORKSHIRE & NE



MIDLANDS & THE EAST



SOUTH EAST



SOUTH WEST

EXPERTLY DESIGNED AND CRAFTED



JESSIE MILBURN
Senior Designer

We follow research insights and trends to keep ahead of the designs that appeal to both today's and tomorrow's customers, while also taking the time to understand what design aspects are important to you and your holiday lifestyle.

Today's trends involve a higher degree of ecological and environmental considerations, and at Swift, we share these values in our design and manufacturing decisions. We aim to replicate the natural world in both colour and material choices across all of our products.

Keeping on top of the trends through observation and research, we have seen a change in how our lodges are now used. Today, leisure and work can comfortably mix, and our lodges become more than just a place to relax and unwind. They now present an opportunity for home working, which creates a new design vision and consideration for our lodges of the future.



SWIFT'S LODGE RANGE

At Swift we want your lodge to be your sanctuary, where you can relax, unwind and let everything else melt away. That's why everything we produce is designed for the utmost luxury and practicality, using our innovative approach to help you create memories for life. Keep reading to view the full collection.



TORONTO LODGE

10



EDMONTON LODGE

16



VENDEE LODGE

22



MOSELLE LODGE

26

WHY SWIFT?

There's no better feeling than stepping into your lodge for a relaxing getaway, so we do everything possible to make that feeling last for years to come.

We pride ourselves on applying superior manufacturing quality to everything we produce, giving you the confidence that your investment is protected and built to last. With the comfort of total assurance in your purchase, you can get on with the important things in life - creating lasting memories.

And prioritising your peace of mind, we offer outstanding warranties, including a 3-year Manufacturer Supersure Warranty, 5-year Structural Warranty and 10-year Chassis Warranty.



Exclusive Duvalay™ mattresses
All beds feature indulgent Duvalay™ mattresses for the best night's sleep



Stain resistant carpets
With stain resistant carpets, there's no need to waste your precious holiday time scrubbing



Integrated fridge freezers
Integrated fridge freezers are included across all ranges to maintain a sleek, uncluttered look



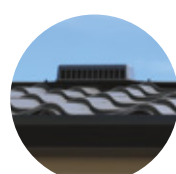
LED ceiling lights
Benefitting the environment and your pocket, bright, low energy LED lighting is included throughout



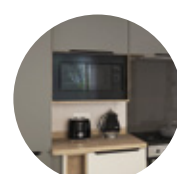
Bonded exterior walls
'Sandwich' construction walls provide a more rigid exterior, bonded with insulation in the middle



Fully galvanised chassis
Protecting your lodge, Swift's robust, Protech 900 or I beam chassis resist corrosion and is warranted for 10 years



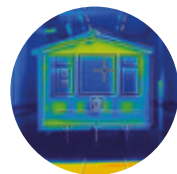
Externally vented extractors
Keep your lodge fresh and dry with externally vented extractors, preventing damp and odours



Integrated microwaves
Optimising valuable work surface space, all Swift lodges feature integrated microwaves



Electrical and USB sockets
Stay connected with electrical and USB sockets in selected areas keeping everything charged



High thermal efficiency
Enjoy outstanding thermal efficiency, proven by environmental chamber testing and calculations

SWIFT WARRANTIES

We also prioritise your peace of mind with our key warranties, including a 3-year Manufacturer Supersure Warranty, 5-year Structural Warranty and 10-year Chassis Warranty.



THE SWIFT DIFFERENCE

ROOF TRUSSES

For accuracy, strength and reliability, all Swift lodges have prefabricated roof trusses. The resulting roof strength meets Grade B snow loading (capable of carrying half a metre of settled snow), while glass wool insulation provides excellent thermal efficiency.



WALL CONSTRUCTION

Our bonded 'sandwich' exterior wall construction gives greater structural strength. The walls are made in modules and are clad with CanExel or Corelux. Each module consists of a robust timber frame, battened out and filled with insulation and a plywood inner skin.

DOUBLE GLAZING

Heat-reflecting 'Thermaglas' double glazing, with is Argon Filled and fitted as standard in our lodges or as an option on our holiday home ranges.

CHASSIS

Swift only specify a fully galvanised chassis as standard. What's more, every Swift lodge comes with a 10-year anti-corrosion warranty.

FLOOR CONSTRUCTION

In Swift lodges, the thermal efficiency is enhanced with Structural Insulated Panel (SIPs) flooring, consisting of a timber frame with floorboards either side, which is injected with polyurethane, giving a greater level of insulation for all year round living.

CONSTRUCTION AND THERMAL EFFICIENCY

Swift's lodge range is built to BS 3632, and meets the NCC Energy Efficiency Rating Scheme for Residential Park Homes. This specification sets a higher standard for thermal efficiency through improvements in roof, wall and floor insulation.



SAFETY COMES FIRST

All our holiday homes are built in accordance with British and European standards and are audited against these build standards by the National Caravan Council (NCC).





Bonded walls for a more robust construction

Strong Protech 900 series chassis for additional protection against rust

TORONTO LODGE



'Country Cottage' interior scheme



Freestanding three-seater sofas with two separate chairs

'Country Cottage' interior scheme



'Country Cottage' interior scheme



'Country Cottage' interior scheme

The all new twin unit Toronto Lodge is the epitome of luxury, with its refined design, spacious living areas, state-of-the-art kitchen and sublime bathrooms. With an option of two or three bedrooms and offering a choice of two interior schemes, the 'Urban'; designed to bring the best of rustic industrial style to your home with blends of natural wood and dark clean finishes, or the 'Country Cottage' with its charming traditional style in calming tones creating the perfect country retreat – there is a Toronto for everyone and the perfect escape into luxury living.

Model size	Bedrooms	Main Bed	Twin Beds	Rear Twin
43' x 20'	2	2.02m x 1.53m (6'8" x 5'0")	1.83m x 0.92m (6'0" x 3'0")	N/A
43' x 20'	3	2.02m x 1.53m (6'8" x 5'0")	1.83m x 0.92m (6'0" x 3'0")	1.83m x 0.92m (6'0" x 3'0")

FEATURES AT A GLANCE

Along with the Swift key features on page 8, Toronto also comes with many desirable extras including:



Central heating



Double glazing



Electric fire



Bath



Wine cooler

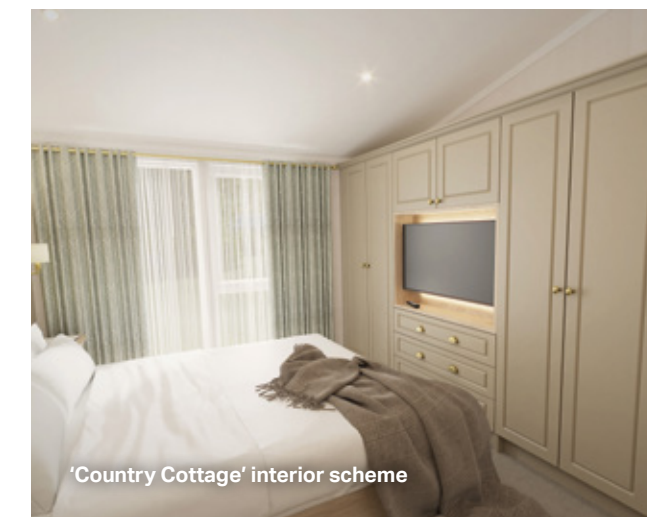


Washer / dryer



Stylish dining table with bench seating and upholstered chairs

'Country Cottage' interior scheme



'Country Cottage' interior scheme



'Country Cottage' interior scheme



Freestanding two-seater and three-seater sofas

'Urban' interior scheme



'Urban' interior scheme



Lots of additional space under the lift up bed

'Urban' interior scheme



'Urban' interior scheme



'Urban' interior scheme



Large 'U' shape kitchen with stylish worktops and splash backs

'Urban' interior scheme



'Urban' interior scheme

TORONTO FEATURES

EXTERIOR

- Residential specification built to BS3632:2015 with improved floor and wall insulation
- 20ft twin unit with 10ft and 10ft split
- Strong Protech 900 series chassis galvanised finish warranted for ten years
- Bonded sandwich exterior wall construction for greater strength
- Coated steel pantile roof
- CanExel high-density wood composite cladding with durable realistic woodgrain texture with contrast split colour exterior in 'Black' and 'Timberwolf' with anthracite window frames
- Front sliding door
- Large front feature window to dining area
- uPVC windows with push-button security locks
- PVC gutters and down pipes
- Low energy exterior light and downlights under front eaves
- Exterior 240V mains socket

INSULATION

- Excellent thermal performance and sound insulation surpassing industry standards:
 - Thermaglas uPVC double glazed windows and doors with improved thermal rating
 - 125mm composite SIPs (Structural Insulated Panel) floor
 - 200mm insulation in roof
 - Combined thermal and acoustic insulation increase within 115mm wall thickness
 - Lagged underfloor pipes

INTERIOR

- New higher internal ceiling
- Luxury carpet with underlay throughout lounge and bedrooms
- Vinyl flooring in kitchen and dining area
- Modern planked ceiling finish
- 30kW gas combi-boiler central heating and hot water system
- Radiator thermostats
- Low energy LED ceiling lights
- USB sockets and wireless chargers in bedroom
- Stainless steel sockets throughout

ENTRANCE HALL

- Entrance utility area with built in boiler cupboard, kitchen cupboards, a small worktop with integrated washer / dryer and two extractor fans
- A feature wall with coat hooks, shoe shelving and stylish bench
- Interior door to living area

LOUNGE

- Freestanding three-seater sofas with two separate chairs, bolsters and scatter cushions and a feature Ottoman footstool (Country Cottage) or freestanding two-seater and three-seater sofas with bolsters and scatter cushions and a round steel coffee table with black accents (Urban)
- Dedicated entertainment unit featuring:
 - 43" TV over fireplace and Sky TV cable for connection only
 - Feature TV wall with storage and dedicated shelving and sockets for DVD player
 - Stylish fireplace
- Full height feature radiator
- Framed wall mirror

KITCHEN / DINING

- Large 'U' shape kitchen with stylish worktops and splash backs.
- Glass fronted integrated electric oven and grill
- Five-burner gas hob with central wok burner and electronic ignition
- Curved glass externally vented extractor hood with lights
- NEW** 25 litre Integrated microwave oven (800w)
- Integrated fridge and freezer
- Integrated 12 place setting dishwasher
- Wine cooler
- NEW** soft close drawers
- Pop-up socket provision in worktop
- Roof VELUX over kitchen units
- Stylish dining table with bench seating and upholstered chairs
- Feature wall in dining area

BATHROOM(S)

- Bath with shower over and screen
- Ensuite with shower enclosure and thermostatic shower and inset vanity basin with drawer
- Minuto freestanding toilet
- LED illuminated vanity mirrors with infrared sensor and demisting pad in ensuite and main bathroom
- Chrome finish towel radiators
- Vinyl flooring
- Privacy glass windows
- Extractor fan in main bathroom and ensuite
- Shaver socket

MAIN BEDROOM

- King-size double bed in main bedroom with lift up storage, feature panel wall and surrounding headboard with reading and background lighting with stylish bedside tables
- King-size Duvalay™ Alba-Ortho mattress providing enhanced orthopaedic care and support for backs. Made with luxury nested pocket springs and topped with the finest springy wool for comfort and durability
- Large his and hers wardrobe with drawers and cupboards, concealer drawers unit with surround large back lit TV position
- Vanity area includes a wardrobe, dressing table and drawers, shelving with feature vanity mirror, and footstall with stainless steel sockets and wireless charger

BEDROOMS

- King-size double bed in main bedroom with lift-up storage, feature panel wall and surrounding headboard with reading and background lighting with stylish bedside tables
- Deeper and more luxurious Aurora Duvalay™ mattress with Crib 5 rated fabric, and featuring 'S-Line' pocket springs and a high-density foam layer for increased and lasting comfort (3ft wide single beds) for all twin rooms
- Tall luxury bedroom headboards with feature panel surround and background and reading lights
- Twin bedroom featuring double wardrobe with drawers, feature backlit TV unit with overhead cupboards and drawers for additional storage, vanity area with dressing table, concealed mirror and stool with stainless steel socket (two bed model) or twin bedroom featuring double wardrobe, vanity area with dressing table, mirror, stool with stainless steel socket and a wall mounted TV (three bed model)
- Roman blinds
- TV sockets & Co-Ax to all bedrooms

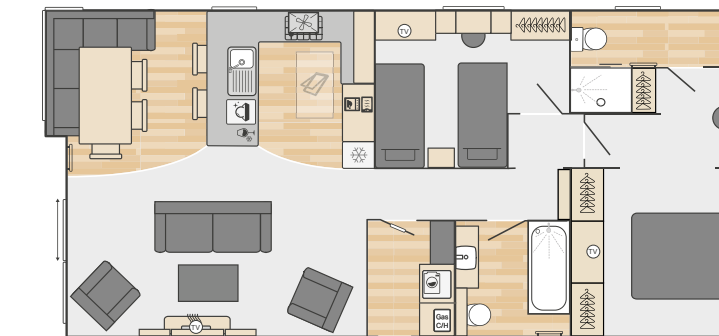
OPTIONS

- Exterior opening single door to main bedroom
- Freestanding three-seater sofa with fold out occasional bed, replacing standard three-seater sofa (Urban scheme only)
- CanExel exterior options: Environmental Acadia green Canexel, full Timberwolf, full Mist Grey, full Sierra Brown all with Anthracite window frames all with Anthracite windows
- Wireless programmable room thermostat
- Bluetooth sound system

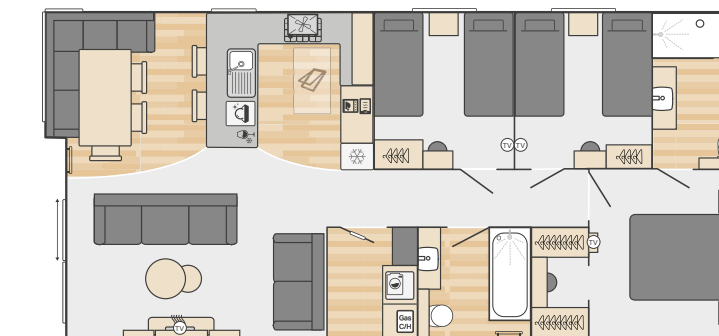
*The model shown may have additional / different specification, please check with supplying Swift distributor or park.

COUNTRY COTTAGE INTERIOR DESIGN SCHEME	URBAN INTERIOR DESIGN SCHEME
Acanthium soft furnishing scheme	Galaxy soft furnishing scheme
Kitchen with country classic feel, featuring shaker style cupboards in Dakar Grey with brass cup drawer handles	Soft black matt modern look doors with minimal black handles and LED lights under Levanto marble effect worktop
Brown Mountain Larch 40mm worktops and splashbacks	White Levanto marble effect 40mm worktop and grey brown lacquered Pine splashback
1½ premium white granite effect sink/drainer with feature brass tap	1½ black matt sink and black tap
Whitewood shiplap feature wall in dining area	Naturewall Bavaria plank feature wall in dining area
Stylish turned leg pedestal dining table with Nebraska top, bench seating and upholstered chairs	Stylish X leg dining table with truffle brown Denver Oak top, bench seating and upholstered chairs
Tournia Stone effect vinyl flooring in kitchen, dining area and bathrooms	Herringbone effect vinyl flooring in kitchen, dining area and bathrooms
Utility area with country classic feel, featuring shaker style cupboards in Dakar Grey with brass handles	Utility area with soft black matt modern look doors with minimal black handles
Dedicated entertainment unit with LED backlit shelving in two tone	Dedicated entertainment unit with feature Naturewall panel display with shelving and storage
Fireplace with Reo stove fire	Contemporary Calido landscape fire
Large gold frame wall mirror in living area	Black frame wall mirror in living area
NEW contrast feature wall in Whitewood shiplap in living areas and bedrooms	NEW contrast feature wall in Northwich in washrooms and bedrooms. Bavaria Plank wall in dining area, slat wall in living area and bedrooms
Freestanding three-seater sofa with two separate chairs and scatter cushions with feature ottoman footstool.	Freestanding two-seater and three-seater sofas bolsters and scatter cushions with round steel coffee table with black accents
King-size double bed in main bedroom with lift up storage, Dakar feature panel with surrounding headboard with reading and background lighting with stylish bedside tables	King-size double bed in main bedroom with lift up storage, feature panel Naturewall slat wall surrounding headboard with reading and background lighting with stylish bedside tables
Wardrobe doors in Dakar Grey	Wardrobe doors in soft black
Brass reading and wall lights in bedroom(s)	Feature industrial pipe light in bedrooms
NEW elevated shaker style interior doors	NEW elevated five panel interior doors
Matt Dakar tongue and groove cottage style panelling splashbacks in bathroom	White Levanto Marble splashbacks in bathroom with black tap, shower screen and shower
Bathroom with chrome bathroom accessories	Bathroom with black bathroom accessories

FLOORPLANS



43' x 20' - 2 Bedroom



43' x 20' - 3 Bedroom



Optional sliding door

Fusion galvanised chassis for additional protection against rust

EDMONTON LODGE



'Scandinavian' interior scheme



Freestanding two-seater and three-seater sofa

'Scandinavian' interior scheme



'Scandinavian' interior scheme









'Scandinavian' interior scheme

Step inside the much loved Edmonton, now bigger and better than before! This luxury twin unit lodge is now available in three layouts, perfect to suit your families need. For smaller families, the two and three bed layouts offer the perfect arrangement, while the new and exclusive four bed layout caters to larger families without compromising on space. In a choice of two interior schemes there is an Edmonton for everyone and the perfect home away from home.

FEATURES AT A GLANCE

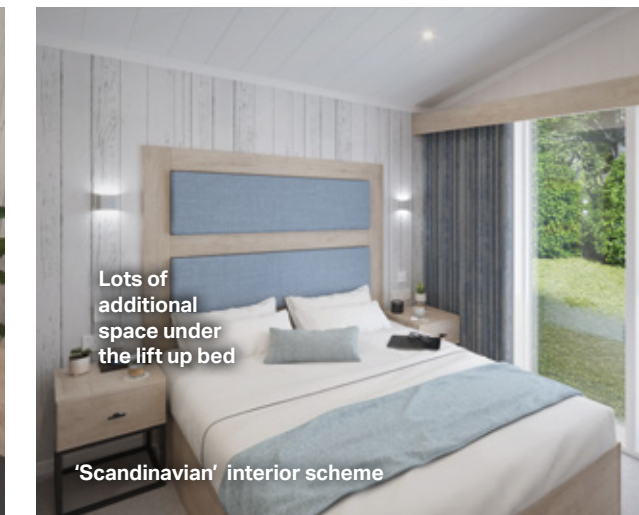
Along with the Swift key features on page 8, Edmonton also comes with many desirable extras including:

- 
Central heating
- 
Wardrobe area
- 
Electric fire
- 
Bath
- 
Heated rails
- 
USB sockets

Model size	Bedrooms	Main Bed	Second double	Rear Twin Beds
40' x 20'	2	2.02m x 1.52m (6'8" x 5'0")		1.83m x 0.92m (6'0" x 3'0")
40' x 20'	3	2.02m x 1.52m (6'8" x 5'0")		1.83m x 0.92m (6'0" x 3'0")
43' x 20'	4	2.02m x 1.52m (6'8" x 5'0")	1.90m x 1.37m (6'3" x 4'6")	1.83m x 0.92m (6'0" x 3'0")



'Scandinavian' interior scheme



Lots of additional space under the lift up bed

'Scandinavian' interior scheme



'Scandinavian' interior scheme



Freestanding two-seater and three-seater sofa

'Coastal' interior scheme



'Coastal' interior scheme



Lots of additional storage under the lift up bed

'Coastal' interior scheme



'Coastal' interior scheme



'Coastal' interior scheme



'Coastal' interior scheme



'Coastal' interior scheme

EDMONTON FEATURES

EXTERIOR

- Residential specification built to BS3632:2015 with improved floor and wall insulation
- 20ft wide twin unit with 10ft and 10ft split
- Fully galvanised Protech 900 chassis, warranted for ten years
- Bonded 'sandwich' exterior wall construction for greater strength
- Distinctive pre-coated 'folded' steel bargeboards with LED lighting to front aspect
- Coated steel pantile roof
- CanExel high density wood composite cladding with durable realistic woodgrain texture in mist grey with anthracite window frames
- Front aspect French doors
- Large front feature windows to dining area
- uPVC windows with push-button security locks
- PVC gutters and down pipes
- Low energy exterior light and downlights under front eaves
- Exterior 240V mains socket

INSULATION

- Excellent thermal performance and sound insulation:
 - Thermaglas uPVC double glazed windows and doors with improved thermal rating
 - NEW** 125mm composite SIPs (Structural Insulated Panels) floor
 - NEW** 200mm insulation in roof
 - NEW** 115mm insulation in walls
 - Lagged underfloor pipes

INTERIOR

- Luxury carpet with underlay throughout hallway, lounge and bedrooms
- Hardwearing vinyl flooring in entrance hall, utility, kitchen, dining area and bathrooms
- Modern planked ceiling finish
- 30kW gas combi-boiler central heating and hot water system
- Radiator thermostats
- Low energy LED ceiling lights throughout
- Good provision of double electric sockets throughout
- USB sockets and wireless chargers in bedroom
- All upholstered fabric has Aquaclean technology

ENTRANCE HALL

- Glazed hallway door
- Entrance utility area with sliding door with a built in boiler cupboard, a small work top with space for optional freestanding washer / dryer and two extractor fans. A feature wall with coat hooks, shoe shelving and stylish boot bench (2 and 3 bed)
- Open entrance utility area with a built in boiler cupboard, a small work top with space for optional integrated washer / dryer and two extractor fans. A feature wall with coat hooks, shoe shelving and stylish boot bench (4 bed)

LOUNGE

- Freestanding two-seater and three-seater sofas with scatter back cushions and a feature ottoman (Coastal) or Freestanding two-seater and three-seater sofas with scatter back cushions, a upholstered footstool and stylish cluster coffee tables with black accents (Scandinavian).
- Stylish fireplace with Reo fire, dust grey feature wall panels and framed seascape picture, separate freestanding TV unit with fixed TV position and Sky TV cable for connection only (Coastal) or dedicated media unit with fixed TV position over fireplace, a long Calido fire and Sky TV cable for connection only, with storage and dedicated shelving (Scandinavian).
- Floor length curtains

KITCHEN / DINING

- Glass fronted electric Thetford oven and grill
- Four-burner gas hob with electronic ignition
- Integrated 25lt microwave oven (800w)*
- Curved glass externally vented extractor fan unit with lights
- Integrated fridge and freezer
- Large L Shaped kitchen with feature lighting under cabinets illuminating splashback, stylish worktops and large feature splash backs
- Island unit with breakfast bar and two stools
- Venetian blinds in kitchen window
- Soft close drawers
- Mains socket provision with USB
- Single sink and drainer with stylish taps
- Freestanding stylish dining table and chairs with fabrics
- Feature wall in white wood with stylish sideboard unit and large round framed wall mirror

- Floor length curtains with curtain pole in dining area (Coastal) or Roman blinds in dining area (Scandinavian)
- Feature lighting above dining table

BATHROOM(S)

- Main bathroom with domestic bath and thermostatic shower above and inset vanity basin and towel cupboard (2 or 3 bed)
- Jack and Jill main bathroom with entrances from hallway and double bedroom with thermostatic shower above and inset vanity basin and towel cupboard (4 bed)
- En suite with Shower enclosure and thermostatic shower and inset vanity basin with drawer
- Minuto freestanding toilet
- Feature LED downlights on splashback, vanity mirrors with infrared sensor and demisting pad in en suite and main bathroom
- White towel radiators in main bathroom
- Extractor fan in main bathroom and en suite

MAIN BEDROOM

- King-size double bed in main bedroom with lift up storage. Feature wall in white wood with surrounding headboard, reading and background lighting and stylish bedside tables
- King-size Duvalay™ Alba-Ortho mattress providing enhanced orthopaedic care and support for backs. Made with luxury nested pocket springs and topped with the finest springy wool for comfort and durability
- Main bedroom with dressing table and stool, overhead feature wall with mirror, overhead TV position and shelving. Walkthrough dressing area leading to en suite with large wardrobes and full length mirror (2 and 3 bed)
- Main bedroom with large double wardrobes, dressing table and stool, drawers and shelving with wall mirror. Feature wall panel overhead TV position and shelf (4 bed)
- Full length curtains

BEDROOM(S)

- Deeper and more luxurious Aurora Duvalay™ mattress with Crib 5 rated fabric, and featuring 'S-Line' pocket springs and a high-density foam layer for increased and lasting comfort (3ft wide single beds) for all twin rooms
- Secondary double bedroom with double bed and lift up storage. Feature wall in white wood with surrounding headboard, reading and background lighting and stylish bedside tables (4 bed)
- Twin rooms with tall luxury padded bedroom headboards with feature wall in 'white wood' surround, background and reading lights and stylish bedside tables
- Twin bedroom features two large double wardrobe with centre vanity unit and stool, with mirror and overhead TV position (2 bed). Single wardrobe with attached vanity unit and stool with mirror and upper shelving (3 bed) or single wardrobe with attached vanity unit with mirror and upper shelving (4 bed)
- Secondary double bedroom features large double wardrobe with drawers and dressing table with mirror, shelf, socket and cube stool (4 bed)
- Roman blinds (secondary double bedroom 4 bed, twin bedroom 3 bed)
- Stylish curtains (4 bed and 2 bed twin bedroom)
- TV sockets & Co-Ax to all bedrooms

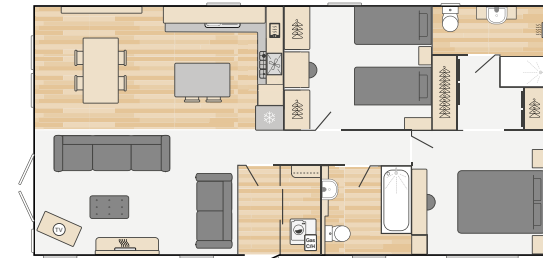
OPTIONS

- One sliding patio door in place of French doors on the lounge side
- Two sliding patio doors in place of French doors on the lounge side and the fixed windows in the dining area
- Exterior opening single door to main bedroom
- Integrated 12-place setting dishwasher
- Freestanding washer / dryer (2 and 3 bed) or integrated washer / dryer (4 bed)
- Freestanding three-seater sofa with fold out occasional bed, replacing standard three-seater sofa
- CanExel exterior options: Environmental Acadia green, full Cliffside, full Sierra Brown all with Anthracite window frames
- Wireless programmable thermostat
- Bluetooth sound system
- Shaving socket in bathroom

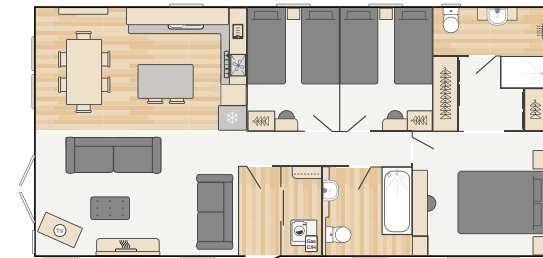
*The model shown may have additional / different specification, please check with supplying Swift distributor or park.

COASTAL INTERIOR DESIGN SCHEME	SCANDINAVIAN INTERIOR DESIGN SCHEME
Dust grey and porcelain colour scheme	Nebraska with light grey and dust grey colour scheme
St lves soft furnishing scheme	FIKA soft furnishing scheme
Kitchen with coastal feel with feature cornice around kitchen units. Shaker style cupboards in Porcelain with stainless steel handles	Soft light grey modern look doors and minimal black handles
White mountain larch worktops and large feature splashbacks	Nebraska worktops and large feature splashbacks
Stainless steel single sink and drainer	Premium black sink with black Abyss tap
Whitewood shiplap feature wall in dining area with silver framed mirror	Whitewood shiplap feature wall in dining area with black framed mirror
Stylish freestanding Albert table with double pedestal legs in bleached oak legs and mid grey Kirsty chairs	Stylish Galway table with dark grey legs and light wood chairs with upholstered fabric
Dining feature 5 arm pendant light with duck egg shades	Stylish dining pendant with feature figment bulbs
Two Lucille bar stools in cayenne silver	Two Cielo black bar stools
Herringbone effect vinyl flooring in utility and entrance area, kitchen, dining area and bathrooms	Tournia Stone effect vinyl flooring in utility and entrance area, kitchen, dining area and main bathroom. Almeria black flooring in en suite
Freestanding two-seater and three-seater scatter back sofas with scatter cushions and ottoman	Freestanding two-seater and three-seater sofas with scatter cushions, a feature footstool and stylish cluster coffee tables with black accents
Stylish fireplace with Reo fire, dust grey feature wall panels and framed seascape picture, separate freestanding TV unit with Sky TV cable for connection only	Media wall featuring TV position over fireplace, a long Calido fire and Sky TV cable for connection only, with storage and dedicated shelving
King-size double bed in main bedroom with lift up storage. Feature wall in white wood with surrounding headboard in Hugo Indigo, reading and background lighting and stylish bedside tables.	King-size double bed in main bedroom with lift up storage. Feature wall in white wood with surrounding headboard in Deluxe Sky, reading and background lighting and stylish bedside tables.
Twin bedroom with tall luxury padded bedroom headboards in Poker Stellar with feature wall in white wood surround, background and reading lights and stylish bedside tables	Twin bedroom with tall luxury padded bedroom headboards in Dakota Lapis with feature wall in white wood surround, background and reading lights and stylish bedside tables
Twin bedrooms with round stool (2 and 3 bed)	Twin bedrooms with square stool (2 and 3 bed)

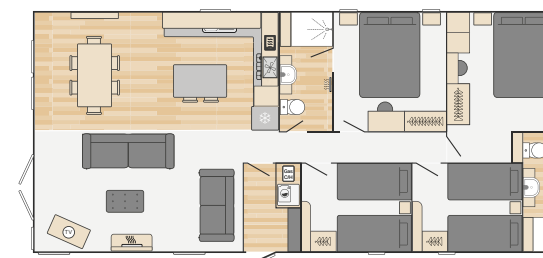
FLOORPLANS



40' x 20' - 2 Bedroom



40' x 20' - 3 Bedroom



43' x 20' - 4 Bedroom



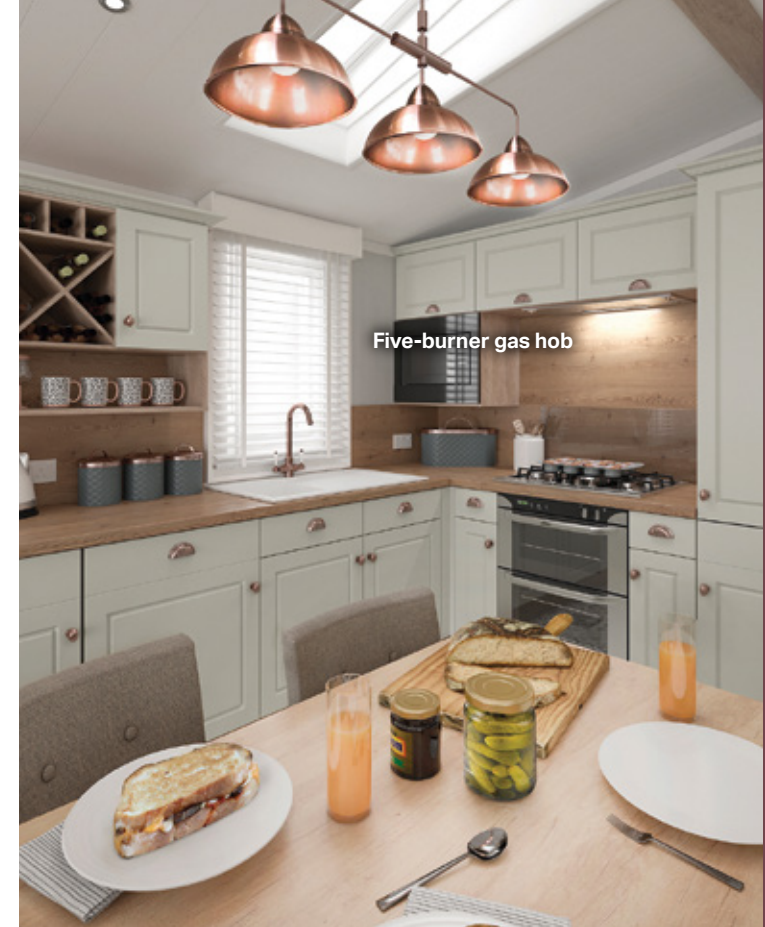
Energy efficient double glazing

Bonded walls for a more robust construction

Fully galvanised chassis for additional protection against rust



Kitchen dresser complements the kitchen units and offers extra storage space



Five-burner gas hob

VENDEE LODGE

Escape the everyday in your own country retreat. Blending rural character with modern looks, Vendee Lodge offers residential specification for year-round getaways in the utmost comfort, with a welcoming and cosy interior providing plenty of room for the whole family.

Model size	Bedrooms	Main Bed	Twin Beds
42' x 13'	2	2.02m x 1.53m (6'8" x 5'0")	1.90m x 0.75m (6'3" x 2'6")
42' x 14'	2	2.02m x 1.53m (6'8" x 5'0")	1.90m x 0.92m (6'3" x 3'0")

FEATURES AT A GLANCE

Along with the Swift key features on page 8, Vendee also comes with many desirable extras including:



Central heating



Double glazing



Electric fire



Heated rails



Wine rack



USB sockets



Central heating & radiator thermostats





VENDEE FEATURES

EXTERIOR

- Residential specification built to BS3632:2015
- Strong I beam and Protech 900 twin axle chassis with galvanised finish, warrantied for ten years
- Bonded sandwich exterior wall construction for greater strength
- Coated steel pantile roof
- Distinctive pre-coated 'folded' steel bargeboards with LED lighting to front aspect
- CanExel high density wood composite cladding with durable, realistic woodgrain texture in mist grey with anthracite window frames
- Front aspect French doors (13ft) or double sliding doors (14ft)
- uPVC windows with push-button security locks
- PVC gutters and down pipes

INSULATION

- Excellent thermal performance and sound insulation:
 - Thermaglas uPVC double glazed windows and doors with improved thermal rating
 - Composite SIPs (Structural Insulated Panel) floor
 - 200mm insulation in roof
 - 95mm insulation in walls
 - Lagged underfloor pipes

INTERIOR

- 7ft (2.13m) high ceilings at side walls
- 'Acanthium' soft furnishing scheme
- Luxury carpet with underlay
- Hardwearing vinyl flooring in Almeria for the kitchen/dining/bathroom(s)
- Nebraska Oak woodgrain
- Modern planked ceiling system
- Condensing gas combi-boiler central heating and hot water system with radiator thermostat
- Low energy LED lighting
- USB sockets
- Good provision of double electric sockets throughout

ENTRANCE HALLWAY

- Seat bench featuring coat hooks and shoe storage
- Large mirror and wall unit

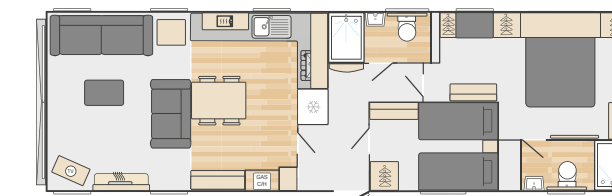
LOUNGE

- Freestanding two-seater and three-seater sofas with scatter cushions
- Complementary footstool with storage
- TV unit with storage, TV provision and Sky TV cable for connection only to TV cabinet
- Additional high level TV point
- Contemporary electric 2kW Optiflame® stove feature fire with mirror over fireplace
- Central Tyler copper effect pendant light feature
- White slatted wooden blinds
- Full height luxury curtains to front aspect
- Contemporary framed colour wall pictures

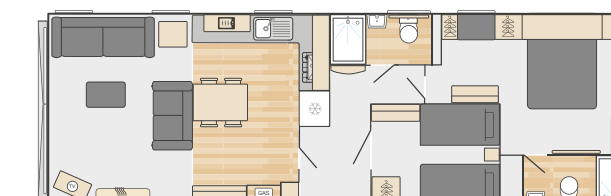
KITCHEN / DINING

- Belling stainless steel oven
- Integrated silver extractor hood vented to outside
- Five-burner gas hob with central wok burner with electronic ignition
- Brown Mountain Larch splashbacks
- 40mm Brown Mountain Larch laminate worktops
- Integrated microwave oven (800w)*
- Integrated fridge and freezer
- White resin bowl and drainer with copper finish tap
- Kitchen with country classic feel. Cupboards in Dakar with Larch woodgrain details, and copper cup door and drawer handles
- Soft close drawers
- Integrated wine rack
- Florence dining table in Nebraska Oak/Painted Porcelain with four Combo chairs

FLOORPLANS



42' x 13' - 2 Bedroom



42' x 14' - 2 Bedroom

BATHROOM(S)

- Shower cubicle with thermostatic shower, topper and LED downlights
- Dual flush WC with soft close toilet seat
- White heated towel rails
- Vanity storage unit with mirror above
- Additional side storage cupboards
- Extractor fan in both bathrooms

BEDROOMS

- King-size double bed in main bedroom with lift up storage King-size Duvalay™ Alba-Ortho mattress providing enhanced orthopaedic care and support for backs. Made with luxury nested pocket springs and topped with the finest springy wool for comfort and durability (Main bedroom only)
- Deeper and more luxurious Aurora Duvalay™ single mattresses with Crib 5 rated fabric, and featuring 'S-Line' pocket springs and a high-density foam layer for increased and lasting comfort
- Padded headboard in main bedroom
- Ample storage with bedside units and over bed cupboards in the main bedroom
- Wall mounted bedside lights
- Dressing table with mirror, lighting and storage
- Window seat and TV panel with credenza drawer unit in main bedroom
- Nature inspired wall pictures
- TV sockets and Co-Ax to all bedrooms, plus booster

OPTIONS

- Lux Pack:
 - Dishwasher
 - Washing machine
 - VELUX window in kitchen
 - Bluetooth® audio connection to lounge ceiling speakers
- Freestanding three-seater sofa with fold out occasional bed, replacing standard three-seater sofa
- Woodgrain exterior in environmental Acadia Green CanExel with Anthracite window frames
- Woodgrain exterior in Sierra Brown CanExel with Rustic Oak or Anthracite woodgrain window frames
- Wireless programmable room thermostat
- Shaving socket in bathroom

*The model shown may have additional / different specification, please check with supplying Swift distributor or park.



Bonded walls for a more robust construction

Protech galvanised chassis for additional protection against rust

MOSELLE LODGE

Moselle Lodge is ready to impress with our first customisable front lounge - guaranteeing you the best view from your sofa. Offering a choice of two interior design schemes, Moselle promises an escape to the country with calming vibes or an escape to Scandinavia with its bold on-trend design featuring 'pops' of black. As with all our lodges, Moselle comes with added assurance from the BS 3632 residential specification, including superb thermal performance and combi-boiler central heating.

Model size	Bedrooms	Main Bed	Twin Beds	Rear Twin Beds
40' x 13'	2	2.02m x 1.53m (6'8" x 5'0")	1.90m x 0.75m (6'3" x 2'6")	
42' x 14'	2	2.02m x 1.53m (6'8" x 5'0")	1.83m x 0.92m (6'0" x 3'0")	
42' x 14'	3	2.02m x 1.53m (6'8" x 5'0")	1.90m x 0.92m (6'3" x 3'0")	1.90m x 0.92m (6'3" x 3'0")
			1.83m x 0.75m (6'0" x 2'6")	1.83m x 0.75m (6'0" x 2'6")



'Country Cottage' interior scheme



Configurable lounge layout with TV points at both sides of lounge with Co-Ax and 240v socket

'Country Cottage' interior scheme



'Country Cottage' interior scheme



'Country Cottage' interior scheme

FEATURES AT A GLANCE

Along with the Swift key features on page 8, Moselle also comes with many desirable extras including:



Central Heating



Double Glazing



Lounge Options



Interior Styles



Bath



Usb Sockets



'Country Cottage' interior scheme



'Country Cottage' interior scheme



'Country Cottage' interior scheme



'Scandinavian' interior scheme shown in holiday home



'Scandinavian' interior scheme shown in holiday home



Large double wardrobe and vanity area



'Scandinavian' interior scheme shown in holiday home



Modern open-plan dining area with table, fixed seating and two stools

'Scandinavian' interior scheme shown in holiday home



'Scandinavian' interior scheme shown in holiday home



'Scandinavian' interior scheme shown in holiday home



'Scandinavian' interior scheme shown in holiday home

MOSELLE FEATURES

EXTERIOR

- Residential specification enhanced to BS3632:2015
- Protech galvanised chassis with finish warranted for 10 years
- Bonded 'sandwich' exterior wall construction for greater strength
- Coated steel pantile roof
- Distinctive pre-coated 'folded' steel bargeboards with LED lighting to front aspect
- CanExel high density wood composite cladding with durable realistic woodgrain texture in Timberwolf with Anthracite window frames
- Front aspect sliding doors
- uPVC windows with push-button security locks
- PVC gutters and down pipes
- Low energy exterior side light

INSULATION

- Excellent thermal performance and sound insulation:
 - 'Thermaglas' uPVC double glazed windows and doors with improved thermal rating
 - Composite SIPs (Structural Insulated Panel) floor
 - 200mm insulation in roof
 - 95mm insulation in walls
 - Lagged underfloor pipes

INTERIOR

- Choice of two interior schemes – Scandinavian or Country Cottage
- 7ft (2.13m) interior side wall ceiling height
- Condensing gas combi-boiler central heating and hot water system
- Radiator thermostats
- Luxury carpet with underlay throughout
- Tournai Stone vinyl flooring in kitchen/dining/ bathroom(s) and Almeria Black flooring in en suite
- Modern Nebraska Oak woodgrain
- Cloakroom area with upholstered seat and shoe rack
- Low energy LED lighting throughout
- USB sockets
- Double electric sockets throughout

LOUNGE

- Configurable lounge layout with TV points at both sides of lounge with Co-Ax and 240V socket
- Large freestanding sofa with footstool
- Freestanding armchair
- Freestanding TV station
- Oval coffee table
- Provision for flat screen TV and Sky TV cables (for connection only)
- Full width lined curtains to front aspect sliding doors
- LED atmospheric lighting in lounge to curtain pelmets

KITCHEN / DINING

- Thetford Cocina glass fronted oven and grill with electronic ignition
- Four-burner gas hob with electronic ignition
- Built in cooker extractor vented to the outside
- Integrated black microwave
- Large hob glass splashback
- Full height integrated fridge freezer
- Nebraska Oak 40mm laminate worktops with matching upstands
- Cast resin sink bowl and drainer with tap
- Full height storage cupboard
- Modern open plan dining area with table, fixed seating and two stools

BATHROOM(S)

- Main bathroom with domestic bath and thermostatic shower above
- Ensuite features large shower cubicle with thermostatic shower mixer and LED downlighting
- Concealed dual flush WC in main bathroom
- Full-width Nebraska splashbacks to sinks
- LED vanity spotlights
- Extractor fan in main bathroom and en suite

BEDROOMS

- King size Duvalay™ Alba-Ortho mattress, providing enhanced orthopaedic care and support for backs. Made with luxury nested pocket springs and topped with the finest springy wool for comfort and durability (main bedroom only)
- Duvalay™ Aurora mattress to all other beds with Crib 5 rated fabric, and featuring 'S-Line' pocket springs and a high density foam layer for increased and lasting comfort
- Large double wardrobe and vanity area in main bedroom
- Bedside cabinets
- LED atmospheric lighting in bedrooms to curtain pelmets and wardrobe tops
- Wall lights in bedroom(s)
- Vanity area with mirror and socket (twin bedroom only)
- TV sockets & Co-Ax to all bedrooms including booster
- USB points in all bedrooms

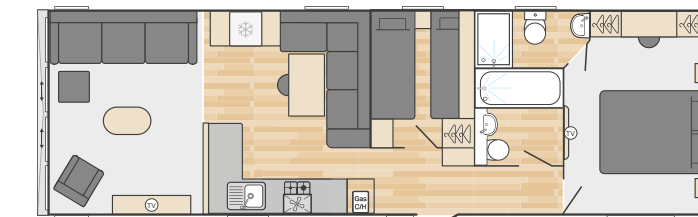
OPTIONS

- Woodgrain exterior in Sierra Brown CanExel with Anthracite window frames
- Woodgrain exterior in Mist Grey CanExel with Anthracite window frames
- Woodgrain exterior in environmental Acadia CanExel with Anthracite window frames
- Corelux cladding in environmental Acadia green with anthracite grey window frames
- Corelux cladding in Timberwolf grey with anthracite grey window frames
- Lux pack - dishwasher, washing machine, Dinette VELUX and Bluetooth® audio connection to lounge ceiling speakers
- Large freestanding sofa with fold-out occasional bed, replacing large standard sofa
- Wireless programmable room thermostat with gas central heating
- Shaving socket in bathroom

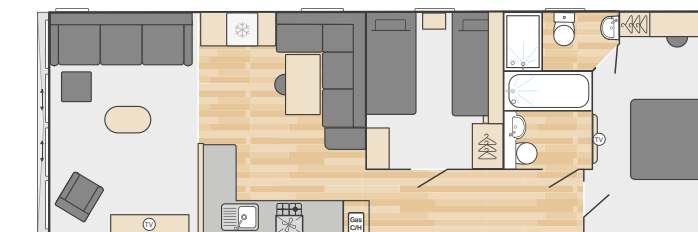
*The model shown may have additional / different specification, please check with supplying Swift distributor or park.

SCANDINAVIAN INTERIOR DESIGN SCHEME	COTTAGE COUNTRY INTERIOR DESIGN SCHEME
FIKA soft furnishing scheme	Acanthium soft furnishing scheme
Wide Venetian blinds to lounge side window (including dinette)	Curtain to lounge side window (excluding dinette)
Kitchen with a modern Scandinavian feel, featuring light grey and dust grey kitchen doors with modern black door handles	Kitchen with country classic feel, featuring shaker style cupboards in Dakar Grey with brass cup drawer handles
Kitchen roller blind in Carnival Shadow	Kitchen roller blind in Carnival Papaya
Black cast resin sink bowl and drainer with matching black tap	White cast resin sink bowl and drainer with brass tap
Concrete effect dining table	Nebraska Oak Top Galway dining table with white frame
Main bedroom doors in light grey	Main bedroom doors in Dakar Grey
Aluminium wall lights in bedroom(s)	Brass reading and wall lights in bedroom(s)

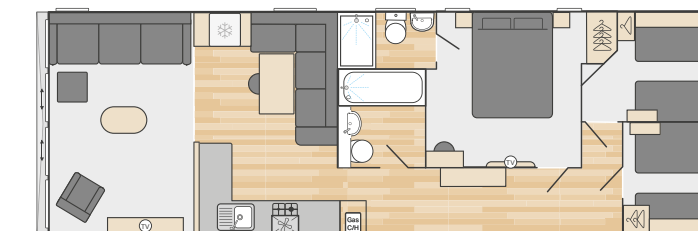
FLOORPLANS



40' x 13' - 2 Bedroom



42' x 14' - 2 Bedroom



42' x 14' - 3 Bedroom

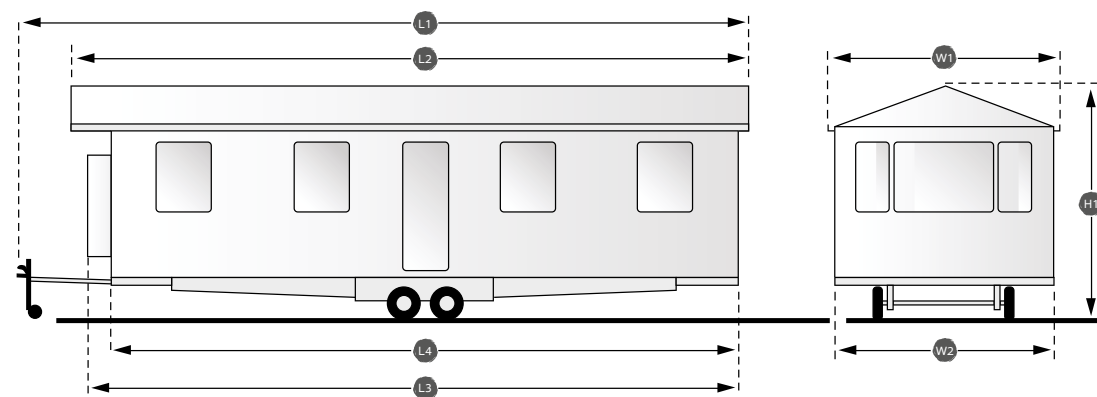
THE RANGE AT A GLANCE

	TORONTO	EDMONTON	VENDEE	MOSELLE
Exterior				
BS3632-2015 Residential specification	•	•	•	•
Protech 900 chassis	•	•	Protech 900 (14ft) I beam (13ft)	Protech galvanised chassis
Bonded 'sandwich' exterior wall construction	•	•	•	•
Coated steel pantile roof	•	•	•	•
Distinctive 'folded' steel bargeboards with lighting	•	•	•	•
CanExel high density wood composite cladding	•	•	•	•
Front aspect French doors	Sliding doors	Optional sliding doors	Sliding doors (14ft) French doors (13ft)	Sliding doors
uPVC windows with push-button security locks	•	•	•	•
PVC gutters and down pipes	•	•	•	•
Low energy exterior light	•	•	•	•
Exterior door to main bedroom	Optional hinged	Optional hinged		
Environmental exterior	Optional	Optional	Optional	Optional
Insulation				
'Thermaglas' uPVC double glazing	•	•	•	•
Composite SIPs (Structural Insulated Panel) floor	•	•	•	•
Insulation thickness in roof	200mm	200mm	200mm	200mm
Insulation thickness in walls	115mm	115mm	95mm	95mm
Lagged underfloor pipes	•	•	•	•
Interior				
Condensing gas combi-boiler central heating and hot water system	•	•	•	•
Radiator thermostats	•	•	•	•
Luxury carpet with underlay throughout	•	•	•	•
Hardwearing, durable vinyl flooring in uncarpeted rooms	•	•	•	•
Low energy LED lighting throughout	•	•	•	•
Planked interior ceiling system	•	•	•	•
USB double socket	•	•	•	•
Woodgrain	Nebraska Oak	Tisano Oak	Nebraska Oak	Nebraska Oak
Wireless programmable room thermostat with gas central heating	•	Optional	Optional	Optional
Lounge				
Freestanding sofa(s) with scatter cushions	•	•	•	•
Armchair	•			•
Pull-out sofa bed mechanism	Optional	Optional	Optional	Optional
Coffee table	Optional	•	Upholstered foot stool	•
Contemporary electric fire	•	•	•	
Branded TV	43"			
Provision for Sky+ connection	•	•	•	•
Bluetooth audio connection to lounge ceiling speaker	Optional	Optional	Optional (with Lux Pack)	Optional (with Lux Pack)
Large framed wall pictures/mirror	Large mirror	•	Large mirror	

	TORONTO	EDMONTON	VENDEE	MOSELLE
Kitchen/dining				
Glass fronted oven and grill with electronic ignition	Integrated electric oven	•	Integrated gas oven	•
4-burner gas hob with electronic ignition	5-burner inc wok burner	•	5-burner inc wok burner	•
Integrated fridge and freezer	•	•	•	•
Microwave oven	•	•	•	•
Wine cooler	•			
Integrated 12 place setting dishwasher	•	Optional	Optional (with Lux Pack)	Optional (with Lux Pack)
Built-in washer dryer (except Vendee and Moselle) with furniture door	Integrated washer / dryer	Optional washer / dryer	Optional (with Lux Pack)	Optional (with Lux Pack)
1½ sink bowl/drainer	•	Single sink	Single White Granite	White or Black Cast Resin Bowl & Drainer
Laminate worktops with matching upstands	40mm	•	40mm	40mm
Soft shut drawers	•	•	•	
VELUX rooflight in kitchen ceiling	•		Optional (with Lux Pack)	Optional (with Lux Pack)
Freestanding dining suite	•	•	•	Fixed
Lux pack - dishwasher, washing machine, VELUX window in kitchen and Bluetooth® audio connection to lounge ceiling speakers			Optional	Optional
Cupboard housing gas central heating boiler			•	•
Utility room				
Gas central heating boiler	•	•		
Freestanding washer/dryer	•	Optional		
Washrooms				
Shower cubicle with thermostatic shower in main bathroom	•		•	Ensuite
Bath with thermostatic shower over	•	Main Bathroom		Main Bathroom
Dual flush WC	•	•	•	•
Extractor fan in main bathroom and en suite	•			•
Chrome finish towel radiator in main bathroom and en suite	•	White	White	
LED vanity lighting	•	•	•	•
Shower cubicle topper	•	•	(with LED light)	(with LED light)
Shaver socket in bathroom	•	Optional	Optional	Optional
Bedrooms				
King-size double bed in main bedroom with Alba Ortho Mattress	•	•	•	•
Gas strut assisted lift-up bed allowing easy access to storage area	•	•	•	
Duvalay™ Crib 5 mattress	•	•	•	•
Padded headboard(s)	•	•	Main Bedroom	
Reading lights	•	•	•	•
TV sockets & Co-Ax to all bedrooms plus booster	•	•	•	•
Walk-in wardrobe in main bedroom	•	2 and 3 bed		
Safety				
Smoke alarm with 10-year battery	•	•	•	•
5-year carbon monoxide detectors	•	•	•	•
Fire extinguisher	•	•	•	•

DIMENSIONS

- L1** Overall length including detachable towbar
- L2** Overall length excluding detachable towbar
- L3** Body length (including bay where applicable)
- L4** Body length at floor level
- W1** Overall width including gutters and down pipes
- W2** Width at floor level
- H1** Overall height



Model	L1	L2	L3	L4	W1	W2	H1
Toronto Lodge 43x20-2 bed	13.97m (45' 10")	13.19m (43' 3")	12.97m (42' 6")	12.67m (41' 7")	6.42m (21' 1")	6.15m (20' 2")	4.13m (13' 6")
Toronto Lodge 43x20-3 bed	13.97m (45' 10")	13.19m (43' 3")	12.97m (42' 6")	12.67m (41' 7")	6.42m (21' 1")	6.15m (20' 2")	4.13m (13' 6")
Edmonton Lodge 40x20-2 bed	13.34m (43' 9")	12.77m (41' 11")	12.34m (40' 6")	12.34m (40' 6")	6.42m (21' 1")	6.15m (20' 2")	4.13m (13' 6")
Edmonton Lodge 40x20-3bed	13.34m (43' 9")	12.77m (41' 11")	12.34m (40' 6")	12.34m (40' 6")	6.42m (21' 1")	6.15m (20' 2")	4.13m (13' 6")
Edmonton Lodge 43x20-4bed	13.97m (45' 10")	13.40m (43' 11")	12.97m (42' 6")	12.97m (42' 6")	6.42m (21' 1")	6.15m (20' 2")	4.13m (13' 6")
Vendee Lodge 42x13-2 bed	13.77m (45' 2")	13.15m (43' 2")	12.77m (41' 11")	12.77m (41' 11")	4.29m (14' 1")	4.01m (13' 2")	3.75m (12' 4")
Vendee Lodge 42x14-2 bed	13.77m (45' 2")	13.15m (43' 2")	12.77m (41' 11")	12.77m (41' 11")	4.29m (14' 1")	4.32m (14' 2")	3.83m (12' 7")
Moselle Lodge 40x13-2 bed	13.24m (43' 5")	12.64m (41' 6")	12.24m (40' 2")	12.24m (40' 2")	4.29m (14' 1")	4.01m (13' 2")	3.75m (12' 4")
Moselle Lodge 42x14-2 bed	13.86m (45' 6")	13.15m (43' 2")	12.86m (42' 2")	12.86m (42' 2")	4.59m (15' 1")	4.32m (14' 2")	3.83m (12' 7")
Moselle Lodge 42x14-3 bed	13.86m (45' 6")	13.15m (43' 2")	12.86m (42' 2")	12.86m (42' 2")	4.59m (15' 1")	4.32m (14' 2")	3.83m (12' 7")

SWIFT WARRANTY SCHEME

You can rest assured that your Swift lodge comes with a comprehensive warranty, allowing you to simply relax and enjoy your lodge.



3-YEAR SUPERSURE WARRANTY

Your lodge has 3-year cover for all parts and fittings (other than the structural exterior). This includes items like:

- Freestanding furniture
- Kitchens
- Showers
- Sanitaryware
- Sockets and switches
- Interior doors and integrated furniture
- Gutter and fall pipes



5-YEAR STRUCTURAL WARRANTY

Your lodge has a 5-year Structural Warranty and Swift will repair (or, at its option, replace) any defects with the structural integrity of the home that come to light and are notified to Swift during the warranty period.

The Structural Warranty covers any defect with the seams of the home, including water ingress through any permanently sealed seam joints and also items like:

- External doors
- uPVC windows
- Roof, walls and ceilings
- Carpets



10-YEAR CHASSIS WARRANTY

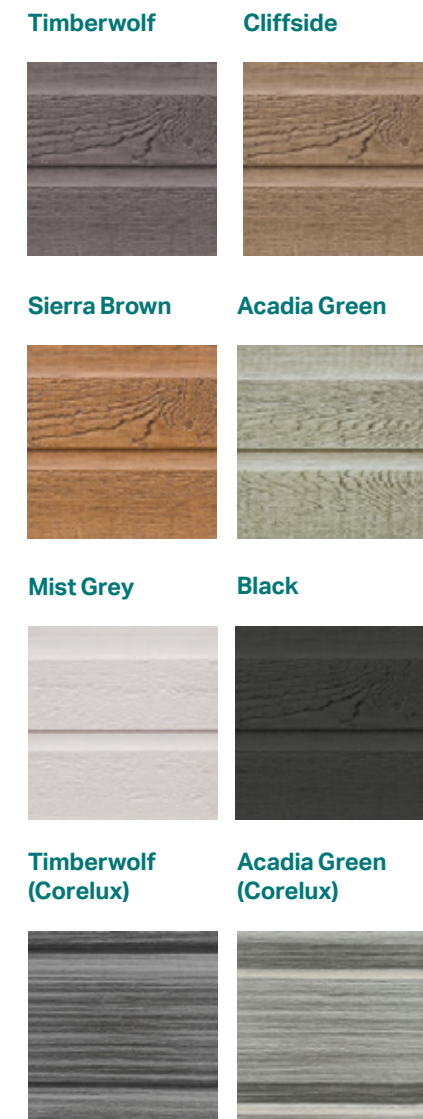
Your lodge has a fully galvanised chassis with a 10-year Chassis Warranty, subject to maintenance. Swift will repair (or, at its option, replace) any defects with the chassis that come to light during this period, but only for as long as the home belongs to its first owner.



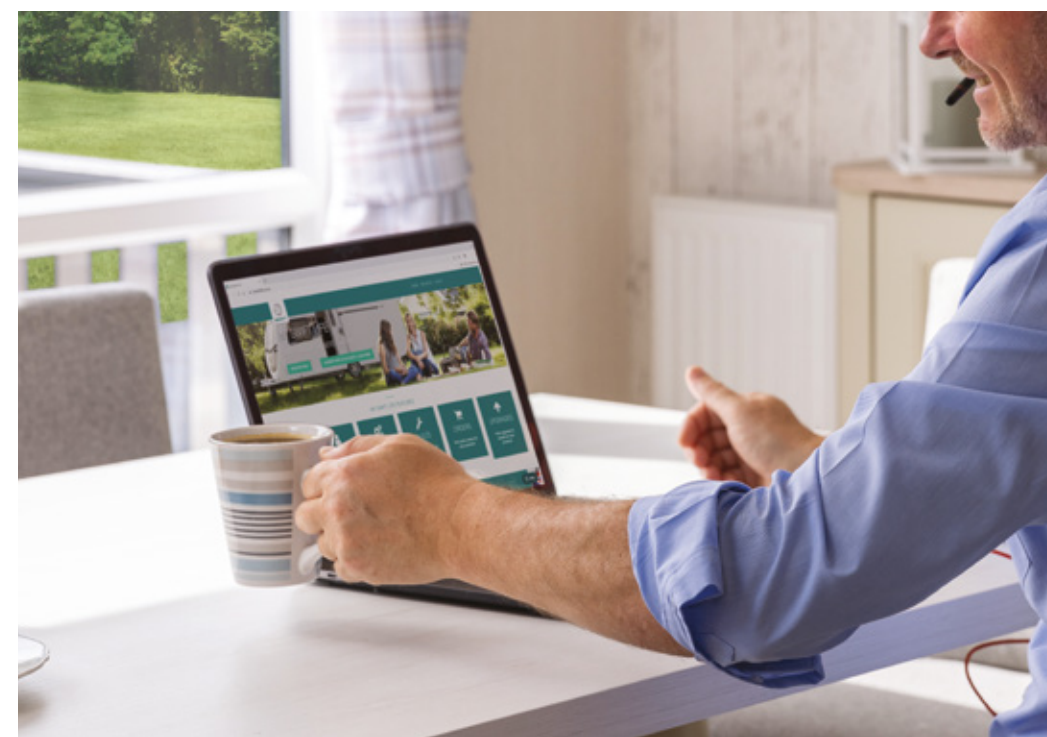
All warranties start from the date an approved Swift Group dealer or park operator transfers the unit to its first owner and are subject to conditions, terms and exclusions. For full details see www.swiftholidayhomes.co.uk/owners

EXTERIOR FINISHES & SOFT FURNISHINGS

Swift lodges are designed for long-lasting great looks, both inside and out. The exterior is clad in CanExel high density wood composite cladding with durable, realistic woodgrain texture for a superb finish, while a range of natural colour treatments add extra character. Corelux cladding is also available as an option on selected ranges. Corelux is a two-tone wood-texture effect premium cladding that boasts a thicker alloy aluminium plank that can withstand extreme weather. Its durability also extends to a UV protection coating that prevents fading, degrading and expansion.



Cladding	Cliffside	Black and Timber wolf	Timberwolf	Mist Grey	Sierra Brown	Acadia	Acadia Green (Corelux)	Timberwolf (Corelux)
Models								
Toronto Lodge		Standard	Option	Option	Option	Option		
Edmonton Lodge	Option			Standard	Option	Option		
Vendee Lodge				Standard	Option	Option		
Moselle Lodge			Standard	Option	Option	Option	Option	Option



ONLY SWIFT APPROVED PARTNERS SELL APPROVED SWIFT LODGES

Swift wants to make sure your buying experience is the best it can be. When you buy from a Swift Approved Partner, you can rest assured that your lodge is fully supported by Swift Group and the supplying distributor.

The benefits of buying from a Swift Approved Partner include:

- Swift Group Approved Warranty
- Dealer access to Swift Connect aftersales support
- Approved spare parts
- Approved engineers
- Access to Swift Approved technical engineers
- Product on display at distributors
- Financial services to help with your purchase*

Find your nearest Swift Approved Partner from our list on the back of the brochure or the Swift Holiday Homes website, swiftholidayhomes.co.uk, and look out for the Swift Approved Partner signs in dealerships.

* Subject to status



Find out more at swiftholidayhomes.co.uk







SWIFT

DISTRIBUTION PARTNERS

Cumbria
Kendal Caravans
Kendal
Tel: 01539 823659
kendalcaravans.co.uk



Devon
Surf Bay Leisure
Winkleigh
Tel: 01837 680100
surfbayleisure.co.uk



Dorset
Surf Bay Leisure
Bridport
Tel: 01308 427444
surfbayleisure.co.uk

Durham
Ideal Caravans
Durham
Tel: 0191 378 0146
idealcaravans.co.uk

Hampshire
PM Leisure
Hayling Island
Tel: 023 9246 7722
pmleisure.co.uk

Lancashire
Westfield Caravans
Blackpool
Tel: 01253 301505
westfieldcaravans.co.uk

Lincolnshire
Seymours Caravans
Skegness
Tel: 01754 764270
seymourscaravans.co.uk

TLC Skegness
Skegness
Tel: 01754 875050
theleisurecompany.co.uk

Norfolk
McDonnell Caravans
Kings Lynn
Tel: 01553 636243
mcdonnellcaravans.co.uk

Parklands Leisure
Wells-next-the-Sea
Tel: 01328 710166
parklandsleisure.co.uk

Pioneer Caravans
Peterborough
Tel: 01733 222244
pioneercaravans.co.uk

Northumberland
Ideal Caravans
Adderstone
Tel: 0191 378 6615
idealcaravans.co.uk

Shropshire
Salop Leisure Ltd
Shrewsbury
Tel: 01743 282400
salopleisure.co.uk



Somerset
Surf Bay Leisure
Brean
Tel: 01278 751171
surfbayleisure.co.uk

Worcestershire
Salop Leisure
Worcester
Tel: 01299 878872
salopleisure.co.uk

Yorkshire
Bridlington
Caravan Centre
Bridlington
Tel: 01262 606777
bridlingtoncaravans.com



Yorkshire Holiday Homes
Wetherby
Tel: 01937 849128
yorkshirehh.co.uk

Ireland
Harry Farrell & Sons Ltd
Dublin
Tel: +353 (0)1 458 9410
harryfarrellsons.ie

Northern Ireland
Sandycove Holiday Homes
Donaghadee
Tel: 028 4275 8200
sandycove.co.uk

Hayes Caravans
Dungannon
Tel: 0288 7767575
hayescaravans.com

Scotland
Swalwell Holiday Group
Gatehouse of Fleet
Tel: 01556 506 200
swalwellholidaygroup.co.uk

Dee Valley Caravans
Aberdeen
Tel: 01330 811351
deevalleycaravans.co.uk

Wales
Blackhills Caravan
Sales
Gower
Tel: 01792 851221
blackhillscaravansales.co.uk



Lloyds Caravan & Lodge Sales
Towyn
Tel: 01745 832050
lloydscaravans.co.uk



Salop Leisure
Machynlleth
Tel: 01654 705900
salopleisure.co.uk

Mon Caravans
Anglesey
Tel: 01248 711070
moncaravans.com

Belgium
Caravancentrum Roels
Tel: +32 (0)9 369 20 26
caravancentrumroels.be

Germany
De-Bergjes
info@bergjes-ostsee.de
+49 (0) 4533 78 54947

Holland
De-Bergjes
+31 (0)475 495 079
info@bergjes.nl

Visit swiftholidayhomes.co.uk



Layouts



Dealer



Video



Social



Brochures

DISCLAIMER

This brochure does not constitute an offer by Swift Group Limited (Swift). Swift reserves the right to alter specifications and prices at any time as materials and conditions demand. Distributors and dealers sell Swift products on their own account and not as agents of Swift. Accordingly, they have no authority to bind Swift or to make any representation or undertaking whatsoever on behalf of Swift. All props are for photographic purposes only and are not included in the specification. Models shown may be fitted with optional extras. Issued September 2023.

CARAVANS • MOTORHOMES • HOLIDAY HOMES • LUXURY LODGES • S-PODS - MADE IN BRITAIN BY SWIFT

