



**SWIFT**

CREATING SMILES FOR LIFE



Love  
Select



Make your staycation a

*safe-cation*

# safe-cation

Where can we go to live, break free?  
The country, coast, hill or sea?

A cocoon from which we can all emerge  
To find new life, far from this scourge

A place away, we can call our own,  
Our bubble, our safe, our protected zone

Where we discover adventures galore  
And together learn to live once more

Our home from home, our precious space  
A self-contained and private place

We now control our destination  
On our perfect safe-cation

Swift. June 2020



# Contents

PG05 LOVE SELECT - WHICH ONE IS FOR YOU?

PG07 SELECT FEATURES

PG12 EXTERIOR STYLE

PG14 THE SELECT RANGE

PG16 FEATURES

PG19 FABRIC OPTIONS

PG20 TECHNICAL SPECIFICATION

PG23 BUILT WITH LOVE

PG24 WHERE TO BUY YOUR SELECT

Choose between a Metallic Iron Grey  
or Metallic Deep Red exterior



Love  
Cuddles



Love  
Select



For maximum  
versatility

WHICH ONE IS FOR YOU?



SELECT GREY

FROM  
£47,180

What better way to celebrate a new season than with a new look? Select makes a contemporary statement this year with a metallic exterior and a choice of five models, covering two, three and four-berth options, ready for wherever the road may take you.



SELECT RED

FROM  
£47,180

For 2021, you can make Select your own with an additional external colour option, with a striking NEW Deep Red finish that complements the powerful graphic scheme.



Overcab panoramic glass sunroof

Flexible table extension





# Select features

For maximum versatility wherever the adventure takes you, the Swift Select panel van is ready to tackle everyday use, sport, relaxing holidays or business. As functional as it is comfortable, Select offers sleek styling and a panoramic sunroof to let the sunshine flood in.

- 1 Main table with rotating leaf extension and second rear table.\*
- 2 Double glazed windows with pleated cassette blinds and flyscreens.
- 3 85L Dometic gas fridge with 3-way power.
- 4 Lounge seats with gas supported underseat storage for easy access.\*
- 5 Fully fitted kitchen with Thetford combination oven and grill, plus glass lid and a stainless steel sink.\*
- 6 Chrome effect plugs and USB sockets for easy charging.

\*Model specific.





Ultra-low energy lighting system with dimmable LED spotlights

8







1

'Oyster Grey' locker doors with over-locker LED ambient lighting.

2

Modern 'Eider' soft furnishings and 'Aralie Sen' woodgrain create an inviting living space.

3

Wall mounted TV bracket (optional with Lux Pack upgrade).

4

Hardwearing 'Savoy' fabric wall covering with stain resistant finish.

5

Plush seating which converts into rear double bed for flexible usage.\*

6

Control and monitor onboard systems with the 7" LCD Swift Command touchscreen panel.

\*Model specific



**1** Fully fitted washroom with Thetford cassette toilet, washbasin and shower.

**2** Mirrored vanity cupboard for convenience and storage.

**3** Dashboard for air con, DAB radio/MP3 player, Bluetooth and switch-off timing.

**4** Driver and passenger seats with swivel function for relaxing driving.

**5** Reversing sensors for a smoother parking experience.\*

**6** 16" alloy wheels.\*

\*Part of the optional Lux Pack



love  
freedom





**1** Fiat Ducato panel van insulated with high performance 3M 'Thinsulate'.

**2** Overcab panoramic glass sunroof to flood the living area with natural light.

**3** Optional Thule pull-out awning and brackets.

**4** 15" steel wheels with Fiat wheel covers or optional 16" alloy wheels as part of the Lux Pack upgrade.

**5** Electric side entrance step with LED side entrance light.

**6** Optional LED daytime running lights, as part of the Drivers Pack upgrade.

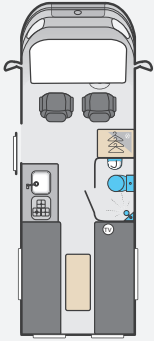
**7** Choice of long and extra-long 3.5 tonne wheel bases.

**8** Metallic exterior finish with complementary graphics and matt black bumper as standard. Or upgrade to a body coloured bumper as part of the Drivers Pack.

# THE SELECT RANGE

## SELECT

**122**  

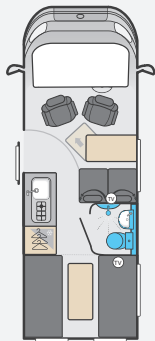


 Length  
6.00m/19'8"

 Width  
2.26m/7'5"

 Weight (MTPLM)  
3500kg

**144**  

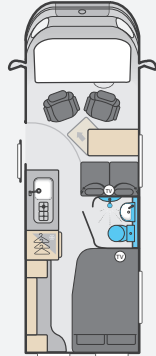



 Length  
6.00m/19'8"

 Width  
2.26m/7'5"

 Weight (MTPLM)  
3500kg

**164**  

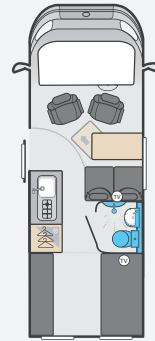


 Length  
6.36m/20'11"

 Width  
2.26m/7'5"

 Weight (MTPLM)  
3500kg

**174**  

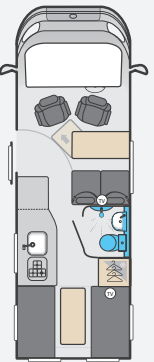


 Length  
6.00m/19'8"

 Width  
2.26m/7'5"

 Weight (MTPLM)  
3500kg

**184**  



 Length  
6.36m/20'11"

 Width  
2.26m/7'5"

 Weight (MTPLM)  
3500kg



# FEATURES

## PANEL VAN

- Fiat Ducato panel van
- European Whole Vehicle Type Approval ensures compliance with strict weight, dimension and safety regulations
- VIN CHIP™ identification system concealed within construction to deter theft and aid quick recovery
- Body insulated with high performance 3M 'Thinsulate'
- Euro 6D 2.3 litre engine with manual gearbox and ESC as standard
  - ESC includes: anti-slip regulation (ASR), roll over mitigation (ROM) and hill holder
- Long wheel base 3.5 tonnes on 122, 144 & 174
- Extra-long wheel base 3.5 tonnes on 164 & 184
- Metallic Iron Grey panel van with complementary graphics and matt black bumper
- 15" steel wheels with Fiat wheel covers
- Cab air-conditioning
- Dashboard design with fully integrated factory fit DAB radio/MP3 player with Bluetooth and switch-off timing adjustable up to 3 hours, and wing mirror antenna for better reception
- Electrically adjusted and heated wing mirrors
- LED side entrance light
- Driver airbags
- Driver and passenger chairs with headrest, comfortable wide backrest, side support, and cab seat swivel
- Height adjustable driver's seat
- Thermally insulated quilted fabric covers for windscreen and cab side windows
- Removable cab carpet
- Electrically operated and tinted cab windows
- Key fob operated remote central locking
- Rain diverter over side entrance door
- ABS brakes
- EBD (electronic brake force distribution)
- Immobiliser with rolling code
- Variable power steering
- Headlamp height adjustment
- Adjustable steering wheel position
- Central cup holder with dash mounted holder for full width tablet and pocket for smartphone with USB port for charging
- Door pockets with bottle holders
- Two 12V sockets in cab
- Fix 'n' Go puncture repair kit

## LIVING AREA

- 'Aralie Sen' woodgrain and 'Oyster Grey' locker doors with chrome strip and chrome push button handles with matching window sills
- Modern 'Eider' interior scheme
- Forward facing travelling seats (except 122)
- 'Savoy' fabric wall covering with stain resistant finish
- Midi-Heki with flyscreen over front dinette (over rear lounge in 122)
- Interior formed decor panels to sliding and rear doors
- Double glazed windows with pleated cassette blinds and flyscreens
- Electric side entrance step
- Main table with rotating leaf table extension (except 122) with second table at rear (except 164 and 174)
- Two rear windows with blinds and flyscreens
- Lounge seats with gas strut lid support in 122 and 184 for easy access
- Smoke alarm
- Carbon monoxide alarm
- Magazine nets and coat hooks (model specific)

## KITCHEN

- Thetford combination thermostatic oven, 3 burner gas hob with glass lid featuring auto gas shut-off functionality and grill, all with electronic ignition (122 and 184)
- Combination Dometic 2 burner hob and stainless steel sink with glass lid and Smev mini grill (144, 164 and 174)
- 85 litre Dometic 230V/12V/gas fridge with 3 way power
- Stainless steel sink bowl and chrome effect mixer tap
- Foldaway worktop extension (except 184)
- Waste bin (except 184)

## WASHROOM

- Mirrored vanity cupboard and fold-away washbasin (122)
- Mirrored vanity cupboard and fixed washbasin (144, 164, 174 & 184)
- Chrome effect mixer tap for vanity and shower (144, 164, 174 & 184)
- Shower mixer with retainer and separate vanity tap (122)
- Thetford cassette toilet with electric flush
- Large bore underslung rigid waste pipes
- Multi-directional rooflight with flyscreen
- Metal curtain rack with easyflow operation

## HEATING AND PLUMBING

- Dual fuel blown air heating with Truma Combi 6 boiler (1.8kW electric/6kW gas/5.8kW combined)
- Digital programmable controller for heating and hot water
- Grade 3 classification (EN 1646-1) for heating and thermal insulation (for sub-zero ambient temperatures)
- Pressurised fresh water system with self-priming pump and accumulator
- 12V exterior point for pump filling of water tank (pump not supplied)
- Provision for 2 x 6kg gas bottles with fitted butane/propane regulator and propane hose
- Truma 'Crash Sensor Mono' regulator for en-route use of heating and water heating
- Insulated 59 litre fresh water tank with tank fill socket (93 litres on 122, 144 & 174)
- Waste water tank with 41 litres capacity (58 litre on 122, 144 & 174)
- Winter Pack including tank heaters and pipe insulation
- Electronically operated fresh and waste water drain valves with insulated covers



## ELECTRICAL

- Exclusive Swift Command control system with large 7" LCD colour touchscreen panel with improved user interface and functionality featuring:
  - Simple controls for monitoring and managing:
    - Power
      - Battery selection, battery level meter and power usage
      - 230V AC load limiter (settable between 5 amps & 16 amps)
      - Solar panel charging levels (where fitted)
    - Heating control of Truma system
    - Environment monitoring with internal and external temperature and internal humidity levels
    - Selected lighting control
    - Water system controls and tank levels and control of tank drain valves
    - Fridge control via CI-BUS connection
  - Pre-installed Swift Command Tracker, a Thatcham Category S7 approved pro-active tracker (subject to annual subscription)
  - Swift Command App with interface that is easy to use and more intuitive, enabling you to manage and monitor key vehicle functions from your mobile device including power, heating and selected lighting:
    - Incorporates a simpler connectivity selection:
      - Bluetooth connectivity when with the vehicle
      - Wi-Fi / GSM connectivity when away from the vehicle
    - Includes the useful 'Places of Interest' feature including 'Campsites' from the Camping & Caravanning Club and Swift dealership locations
  - Mains 230V supply via easy-access consumer unit to sockets, fridge, heater, water heater and battery charger/transformer
  - Minimum of four chrome 230V sockets and dedicated USB points
  - 12V socket for rear passenger seats (model specific)
  - 25 Amp/300 Watt charger/transformer for leisure batteries
  - TV points with 230V and 12V sockets and aerial socket (x2 in 144, 164, 174 & 184)
  - Ultra-low energy lighting system:
    - Dimmable LED spotlights
    - Over-locker LED ambient lighting
  - Fully sealed, long life, 80 Amp-hour (Dir 2006/66/EC) leisure battery
  - 25 metre mains hook-up cable
  - Black branded speakers fitted in roof at rear

## CUSTOMER SERVICE

- Exclusive Connect Direct online account with direct access to Swift

## FACTORY FIT OPTIONS

- Drivers Pack
  - LED daytime running lights
  - Cruise control
  - Driver and passenger airbags
  - Captain's chairs with cab seat covers
  - Height adjustable seat to match driver's seat
  - Body coloured bumper
  - Black cab trims (light bezels, grille and skid plate)
- Lux Pack (only available in conjunction with Drivers Pack)
  - 16" alloy wheels
  - Upgraded 'Silver Techno' dash kit
  - Loose fit habitation carpets
  - Pleated cab blinds (front and side blinds)
  - TV aerial and dedicated TV bracket
  - 40W solar panel and regulator
  - Reversing sensors
- **NEW** Deep Red Metallic panel van with complementary graphics and matt black bumper
- Upgrade to 140bhp, 2.3 litre engine with manual gearbox, ESC and Eco Pack
  - Eco Pack includes; stop and start system, smart alternator and more effective energy saving fuel pump
- Upgrade to 140bhp, 2.3 litre engine with 9 speed full automatic transmission, ESC and Eco Pack
  - Eco Pack includes; stop and start system, smart alternator and more effective energy saving fuel pump
- Thule Omnistor pull out awning and brackets
- 'SwiftShield' soft furnishing scheme

## DEALER FIT OPTIONS

- Annual subscription to Swift Command Tracker by Sargent

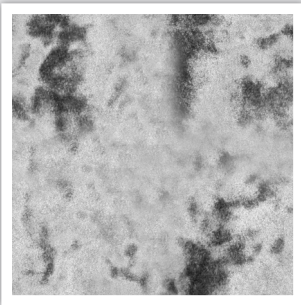
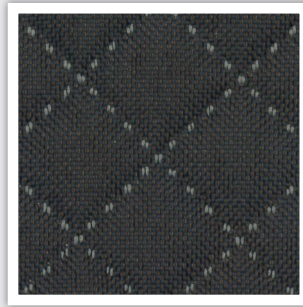
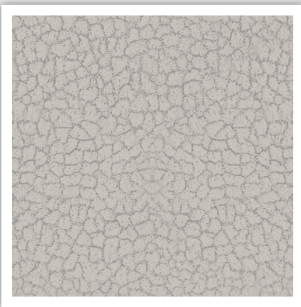


Love  
Comfort

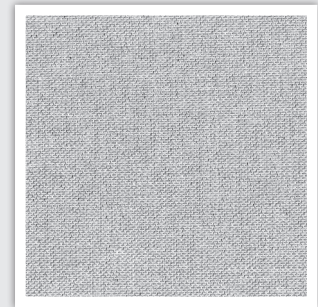
# FABRIC OPTIONS

Within the Select range, there are two fabric options available; the 'Eider' scheme that comes as standard and the optional 'SwiftShield' scheme. Please ask your dealer for full details.

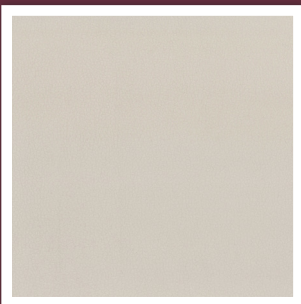
## SEATING



## WALLBOARD



## SEATING - SWIFTSHIELD



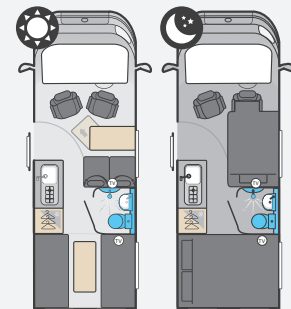
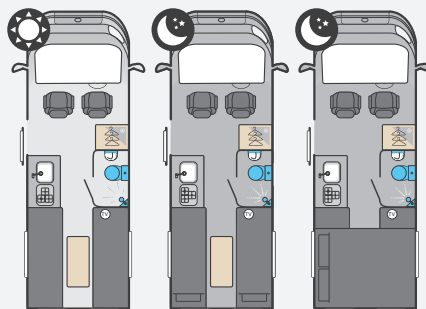
## WHAT IS SWIFTSHIELD?

SwiftShield fabric has a soft suede type feel and has been treated during manufacturing to resist stains. It is very easy to clean and just requires a soft cloth dampened with water to remove most stains. SwiftShield is exclusive to Swift Group, you can find out more on Swift TV.



[swifttv.co.uk](http://swifttv.co.uk)

# TECHNICAL SPECIFICATION



	Standard	Optional	Optional	Standard	Optional	Optional
Fiat MultiJet Diesel Engine	120	140	140 Auto	120	140	140 Auto
Engine Capacity	2.3 ltr			2.3 ltr		
Engine Power	120 HP @ 2750rpm	140 HP @ 3500rpm	140 HP @ 3500rpm	120 HP @ 2750rpm	140 HP @ 3500rpm	140 HP @ 3500rpm
Engine Torque	320 Nm @ 1400rpm	350 Nm @ 1400rpm	350 Nm @ 1400rpm	320 Nm @ 1400rpm	350 Nm @ 1400rpm	350 Nm @ 1400rpm
Chassis	Panel Van			Panel Van		
Wheel Base	4.04m / 13'3"			4.04m / 13'3"		
Seat Belts (inc. driver)	2			4		
Berths (Sleeping Positions)	2			3		
Overall Length	6.00m / 19'8"			6.00m / 19'8"		
Overall Body Width (Mirrors folded)	2.26m / 7'5"			2.26m / 7'5"		
Overall Height	2.72m / 8'11"			2.72m / 8'11"		
Optional Awning	Thule 6300 3.5m			Thule 6300 3.5m		
Maximum Technical Permissible Laden Mass (A)	3500kg			3500kg		
Mass in Running Order (B)	2862kg Est	2862kg Est	2895kg Est	2924kg Est	2924kg Est	2957kg Est
Maximum User Payload (A-B)	638kg Est	638kg Est	605kg Est	576kg Est	576kg Est	543kg Est
Essential Habitation Equipment	0kg			0kg		
Thermal Insulation Grade	THREE			THREE		
<b>BED SIZES</b>						
Front Double						
Front Offside Single				170cm x 90cm / 54cm / 5'7" x 2'11" / 1'9"		
Rear Double	186cm x 188cm / 6'1" x 6'2"			183cm x 135cm / 6'0" x 4'5"		
Rear Single Offside	188cm x 65cm / 6'2" x 2'2"					
Rear Single Nearside	188cm x 65cm / 6'2" x 2'2"					

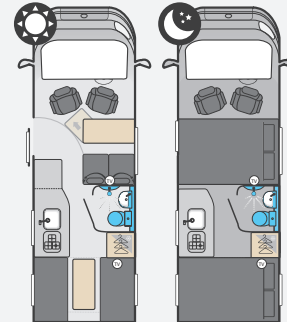
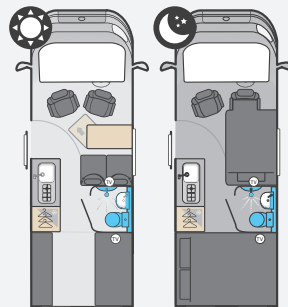
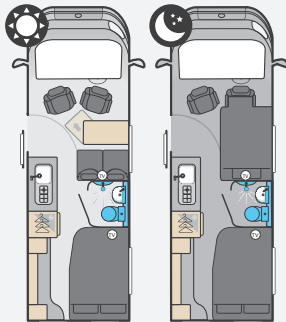
164



174



184



164			174			184		
Standard	Optional	Optional	Standard	Optional	Optional	Standard	Optional	Optional
120	140	140 Auto	120	140	140 Auto	120	140	140 Auto
2.3 ltr			2.3 ltr			2.3 ltr		
120 HP @ 2750rpm	140 HP @ 3500rpm	140 HP @ 3500rpm	120 HP @ 2750rpm	140 HP @ 3500rpm	140 HP @ 3500rpm	120 HP @ 2750rpm	140 HP @ 3500rpm	140 HP @ 3500rpm
320 Nm @ 1400rpm	350 Nm @ 1400rpm	350 Nm @ 1400rpm	320 Nm @ 1400rpm	350 Nm @ 1400rpm	350 Nm @ 1400rpm	320 Nm @ 1400rpm	350 Nm @ 1400rpm	350 Nm @ 1400rpm
Panel Van			Panel Van			Panel Van		
4.04m / 13'3"			4.04m / 13'3"			4.04m / 13'3"		
4			4			4		
3			3			4		
6.36m / 20'11"			6.00m / 19'8"			6.36m / 20'11"		
2.26m / 7'5"			2.26m / 7'5"			2.26m / 7'5"		
2.72m / 8'11"			2.72m / 8'11"			2.72m / 8'11"		
Thule 6300 3.5m			Thule 6300 3.5m			Thule 3200 3.5m		
3500kg			3500kg			3500kg		
2974kg	2974kg	3007kg	2904kg	2904kg	2937kg	3009kg Est	3009kg Est	3042kg Est
526kg	526kg	493kg	596kg	596kg	563kg	491kg Est	491kg Est	458kg Est
0kg			0kg			0kg		
THREE			THREE			THREE		
170cm x 90cm / 54cm / 5'7" x 2'11" / 1'9"			170cm x 90cm / 54cm / 5'7" x 2'11" / 1'9"			176cm x 122cm / 5'9" x 4'0" Est		
185cm x 130cm / 6'1" x 4'3"			183cm x 137cm / 6'0" x 4'6"			170cm x 90cm / 54cm / 5'7" x 2'11" / 1'9" Est		
						186cm x 120cm / 6'1" x 3'11" Est		

21

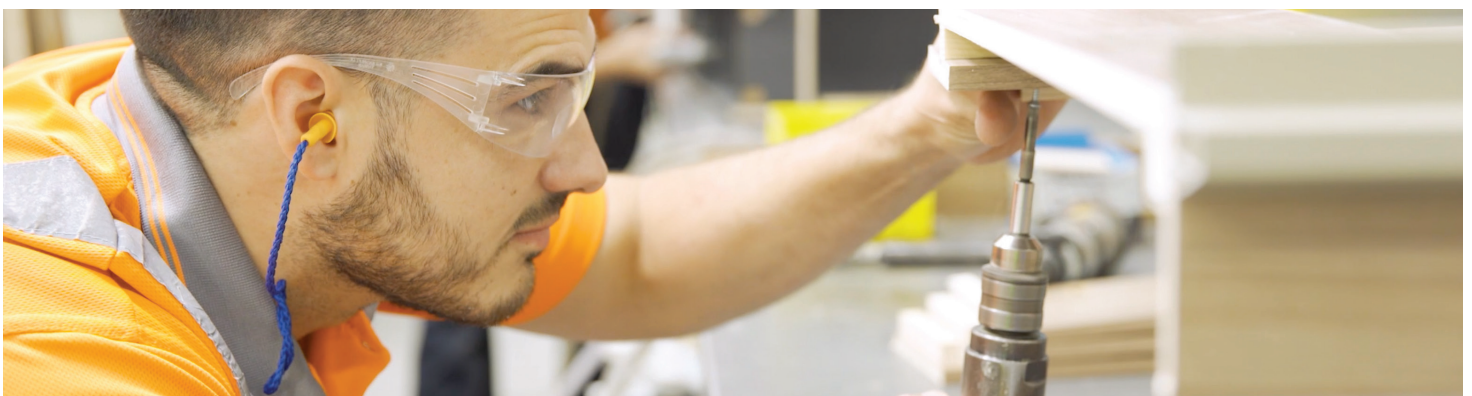
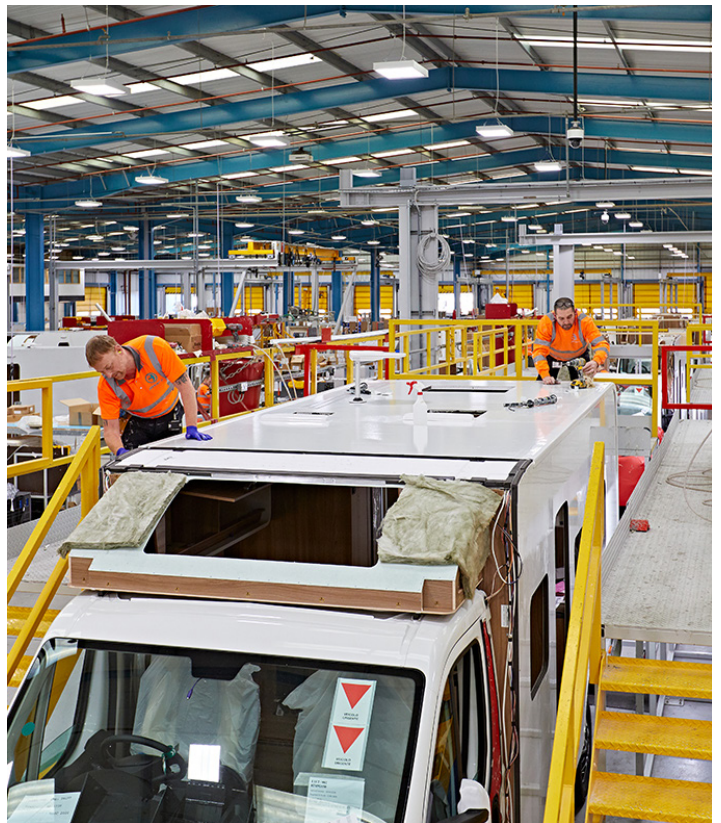
## GENERAL TECHNICAL NOTES

1. The Maximum User Payload includes:

- a) The conventional load (this is the allowance for passengers)
- b) Essential habitation equipment (items and fluids required for safe and proper functioning of habitation equipment)
- c) Optional equipment (items available from the manufacturer over and above the standard specification)
- d) Personal effects (those items not covered by the above)

2. The Mass in Running Order is the mass of the unladen vehicle including a 75kg allowance for the driver plus engine coolants and 90% of the fuel tank capacity and 1 x 6kg Calor Lite LPG cylinder. The MRO is calculated with the fresh water tank empty. If you travel with water in the fresh water tank then the payload will reduce accordingly.

- 3. Please take care to ensure that you have allowed for the masses of all items you intend to carry in the motorhome, e.g. passengers, optional equipment, essential habitation equipment and personal effects, such as clothing, food, pets, bicycles, sailboards, sports equipment etc.
- 4. Warning - under no circumstances should the maximum technical permissible laden mass of this motorhome be exceeded.





From the first drawing right through to the moment you take the keys, each Swift leisure vehicle is built with love.

Every stage of the manufacturing process is completed with the greatest care and attention to detail, with the knowledge, experience and heart of generations of craftsmanship showing in all components. This, coupled with state-of-the-art technologies, allows Swift to deliver the highest standards of construction.

We undertake one of the most extensive research and testing programmes in the industry, and deploy innovations designed to help make your holidays comfortable and hassle-free. From our revolutionary SMART and SMART 3 technology to hardwearing interiors, Swift leisure vehicles are built to last.



## SCOTLAND

1. **Perthshire Caravans**, Errol  
www.perthshire-caravans.co.uk
2. **Highland Campervans**, Dalcross  
highlandcampervans.com

## NORTHERN IRELAND

3. **Thompson Leisure**, Dromore  
thompsonleisure.com

## ENGLAND - NORTH WEST

4. **Bardsea Leisure**, Ulverston  
bardsealeisure.co.uk
5. **Todds Motorhome Specialists**, Preston  
toddsmotorhomes.co.uk
6. **Preston Caravans & Motorhomes**,  
prestoncm.co.uk
7. **Lowe & Rhodes**, Stoke-on-Trent  
loweandrhodes.co.uk

## WALES

8. **3 As Caravan Co**, Carmarthen  
3acaravans.co.uk
9. **Spinney Flintshire**, Deeside  
spinney.co.uk
10. **Newport Caravans Ltd**, Newport  
newportcaravans.com

## ENGLAND - SOUTH WEST

11. **Alan Kerr Ltd**, Paignton  
alankerr.co.uk
12. **Dolphin Motorhomes**, Christchurch  
dolphinmotorhomes.co.uk
13. **Highbridge Caravan Centre**, Highbridge  
highbridgecaravans.co.uk
14. **West Country Motorhomes**, Brent Knoll  
westcountrymotorhomes.co.uk
15. **West Country Motorhomes**, Swindon  
westcountrymotorhomes.co.uk
16. **Chelston Motorhomes**, Wellington  
chelstononline.co.uk

## ENGLAND - WEST MIDLANDS

17. **South Hereford Motorcaravan Centre**  
motorcaravancentre.co.uk
18. **Salop Leisure**, Shrewsbury  
salopleisure.co.uk
19. **Broad Lane Leisure**, Alcester  
broadlane.co.uk
20. **Broad Lane Leisure**, Kenilworth  
broadlane.co.uk
21. **AEG Motorhomes**, Stourbridge  
aegmotorhomes.co.uk

## ENGLAND - NORTH EAST

22. **Kimberley Darlington**  
kimberleycaravans.co.uk
23. **United British Caravans Ltd**, Newcastle  
unitedbritishcaravans.co.uk

## ENGLAND - YORKSHIRE

24. **Wandahome**, South Cave  
caravanbuys.com
25. **Lowdham Leisureworld**, Huddersfield  
lowdhams.com

## ENGLAND - EAST MIDLANDS

26. **Don Amott Leisure Ltd**, Derby  
leisurekingdom.co.uk
27. **Brownhills Motorhomes**, Newark  
brownhills.co.uk
28. **Lowdham Leisureworld**, Nottingham  
lowdhams.com

## ENGLAND - SOUTH EAST

29. **Homestead Caravan Centre**, Weeley  
homesteadcaravans.co.uk
30. **Dolphin Motorhomes**, Southampton  
dolphinmotorhomes.co.uk
31. **Downtide Caravans & Leisure**, Norwich  
downtide.com
32. **Caravan Tech**, Etchingham  
caravantech.co.uk

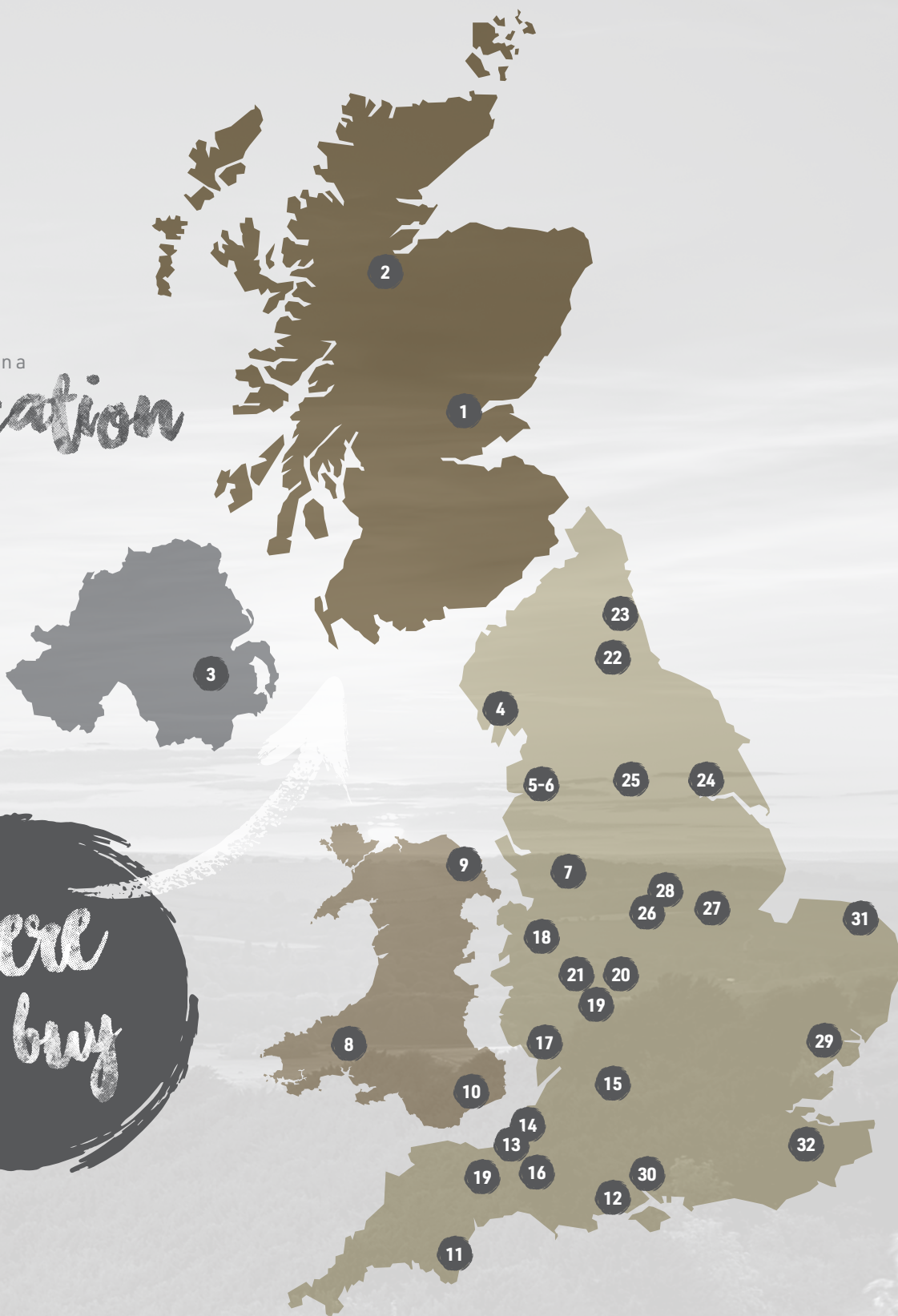




Make your staycation a

*safe-cation*

*where  
to buy*





**SWIFT**  
CREATING SMILES FOR LIFE

## TOURERS



SPRITE



CHALLENGER



ELEGANCE



BASECAMP



## MOTORHOMES



SELECT



EDGE



ESCAPE



KON-TIKI SPORT



KON-TIKI

## HOLIDAY HOMES & LODGES



HOLIDAY HOMES



LODGES



S-POD



Configure



Downloads



Social



Watch videos



Find a dealer

[swiftgroup.co.uk](http://swiftgroup.co.uk)

## DISCLAIMER

This brochure does not constitute an offer by Swift Group Limited (Swift). Swift reserves the right to alter specifications and prices at any time as materials and conditions demand. Distributors and dealers sell Swift products on their own account and not as agents of Swift. Accordingly, they have no authority to bind Swift or to make any representation or undertaking whatsoever on behalf of Swift. All props are for photographic purposes only and are not included in the specification. Models shown may be fitted with optional extras. Issued October 2020.

CARAVANS • MOTORHOMES • HOLIDAY HOMES - MADE IN BRITAIN BY SWIFT

